



DP40NT  
DP45NT  
DP50CNT  
DP50NT  
DP55NT

GP40NT  
GP45NT  
GP50CNT  
GP50NT  
GP55NT

# RUGGED AND POWERFUL

**SPECIFICATIONS**

**ENGINE POWERED LIFT TRUCKS 4.0 - 5.5 TONNES**



# HEAVY DUTY ENDURANCE AND PERFORMANCE

OUR LARGER ENGINE-POWERED COUNTERBALANCE FORKLIFTS ARE BUILT TO HANDLE HEAVY DUTY APPLICATIONS. THEY'RE THE NATURAL CHOICE FOR USE IN PORTS, FREIGHT FACILITIES, CONSTRUCTION SITES AND METAL AND BRICK OPERATIONS. YOU CAN DEPEND ON THEIR POWER AND SPEED, EVEN IN THE MOST DEMANDING WORKPLACES AND DIFFICULT CONDITIONS.



Durable design highlights include large-diameter drive shafts and easy-to-maintain drum brakes. Cooling and air intake systems are designed for effective, trouble-free performance and long component life. The LCD display and LED indicators combine with detailed diagnostics for rapid fault finding and minimal downtime.

High-performing industrial diesel and LPG engines, with a strong reputation for quality and dependability, have been chosen to maximise productivity. Their uncompromising power, delivered via a fully floating powerline, generates impressive gradeability and travel speed.

Drivers benefit from a hydrostatic steering system, which makes all manoeuvring light and easy. Efficient braking and presence detection systems add to their safety. The comfortable operator compartment is easily accessed thanks to an open step frame and grab bar.

A wide range of lift capacities and masts enables the ideal choice to match your application's needs. Further fine-tuning is possible through a variety of optional features, such as the Pro-Shift transmission protection system. This provides auto deceleration, hill hold and controlled direction reversal functions.

## LOWER COST OF OWNERSHIP

- Easy-to-maintain drum brakes reduces down time.
- High positioned air intake system lengthens the life of air intake filter cartridges.
- LCD display with LED indicators, providing all safety functions, allows for rapid trouble shooting.
- Large diameter driving shafts for durability in the most demanding applications.
- Long service interval.
- Detailed diagnostics are possible for easy fault finding.
- Highly regarded, market proven industrial diesel and LPG engines give excellent performance.

## UNMATCHED PRODUCTIVITY

- Cooling system designed to reduce blockages utilising pusher type radiator airflow.
- Wide variety of mast types and lifting heights allows the truck to be specified to your needs.
- High capacity ratings.
- Full floating power line featuring two forward speeds and one speed reverse with high gradeability and travel speed.
- Hydrostatic steering system makes maneuvering the truck light and easy.

## SAFETY AND ERGONOMICS

- PDS+, presence detection system disengages drive and hydraulic functions when the operator's seat is vacated.
- Electronic button operated parking brake for unblocked access.
- Operator identification system with Pin-code standard.
- Covered tilt cylinders, hoses and neat dashboard area.
- Hydraulic controlled drum brake system for safe operation.
- Open step frame and grab bar allow easy access.



# STANDARD EQUIPMENT AND OPTIONS

GENERAL	DIESEL				LP GAS			
	DP40-45NT	DP50CNT	DP50NT	DP55NT	GP40-45NT	GP50CNT	GP50NT	GP55NT
Dust proof kit	○	○	○	○	○	○	○	○
Line filter for torque converter	○	○	○	○	○	○	○	○
LPG bracket removed	–	–	–	–	○	○	○	○
Rear axle under guard	○	○	○	○	○	○	○	○
Tilt cylinder boot kit	○	○	○	○	○	○	○	○
Lifting eyes mounted on counter weight	○	○	○	○	–	–	–	–
Belly plate (under cover)	○	○	○	○	–	–	–	–
Dust proof strainer	○	○	○	○	○	○	○	○
Hydraulic oil cooler	○	○	○	○	○	○	○	○
<b>HYDRAULIC</b>								
2-way control valve MC	●	●	●	●	●	●	●	●
3-way control valve MC	○	○	○	○	○	○	○	○
4-way control valve MC	○	○	○	○	○	○	○	○
5-way control valve MC	○	○	○	○	○	○	○	○
<b>MAST, FORKS AND CARRIAGE</b>								
Loose mast	○	○	○	○	○	○	○	○
Lifting eye for mast	○	○	○	○	○	○	○	○
Uninstalled mast	○	○	○	○	○	○	○	○
Side shifter 1190 mm	○	○	○	○	○	○	○	○
Side shifter 1500 mm* (*Note: Requires Carriage 1500mm)	○	○	○	○	○	○	○	○
Integral side shifter 1190mm	○	○	○	○	○	○	○	○
Fork deletion	○	○	○	○	○	○	○	○
<b>ELECTRIC</b>								
Backup handle with horn button	○	○	○	○	○	○	○	○
Electric diesel control (Diesel)	○	○	○	○	–	–	–	–
Speed control system (LPG)	–	–	–	–	●	●	●	●
Indicator kit	○	○	○	○	○	○	○	○
LED light set	○	○	○	○	○	○	○	○
LED front work light	○	○	○	○	○	○	○	○
LED rear work light	○	○	○	○	○	○	○	○
Load weight indicator (for simplex & triplex masts)	○	○	○	○	○	○	○	○
Strobe light (orange)	○	○	○	○	○	○	○	○
USB socket	●	●	●	●	●	●	●	●

● Standard ○ Option

For more information about standard and available optional equipment, please contact your dealer.

# STANDARD EQUIPMENT AND OPTIONS (CONTINUED)

	DIESEL				LP GAS			
	DP40-45NT	DP50CNT	DP50NT	DP55NT	GP40-45NT	GP50CNT	GP50NT	GP55NT
<b>OHG AND CABIN</b>								
Full suspension vinyl seat with orange belt and seat switch (seat switch disables hydraulic functions if operator is not seated)	●	●	●	●	●	●	●	●
Overhead guard with roof canvas	●	●	●	●	●	●	●	●
Presence Detection System (PDS+)	●	●	●	●	●	●	●	●
Rear view mirrors	●	●	●	●	●	●	●	●
Tilt steering column with memory position	●	●	●	●	●	●	●	●
Audible back-up alarm (buzzer)	●	●	●	●	●	●	●	●
<b>TYRES</b>								
Pneumatic tyres	●	●	●	●	●	●	●	●
Solid pneumatic tyres	○	○	○	○	○	○	○	○
Pneumatic dual drive tyres	○	○	○	○	○	○	○	○
Solid pneumatic dual drive tyres	○	○	○	○	○	○	○	○
<b>ENVIRONMENT</b>								
Single element air cleaner	●	●	●	●	●	●	●	●
Double element cyclone air cleaner	○	○	○	○	○	○	○	○
Elevated exhaust	○	○	○	○	-	-	-	-

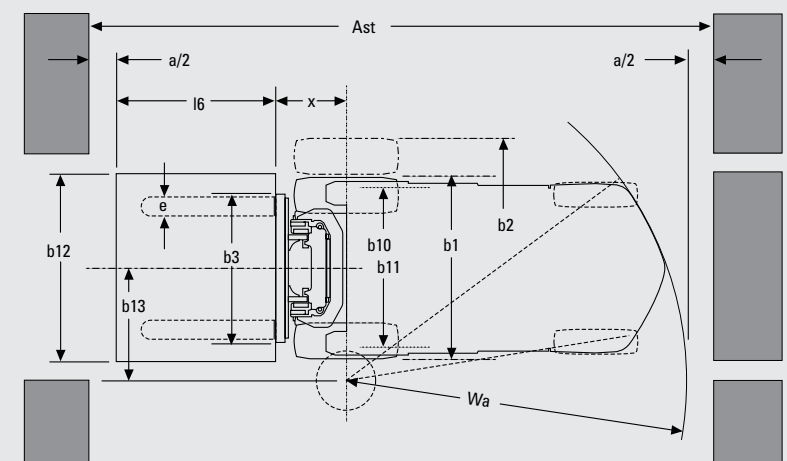
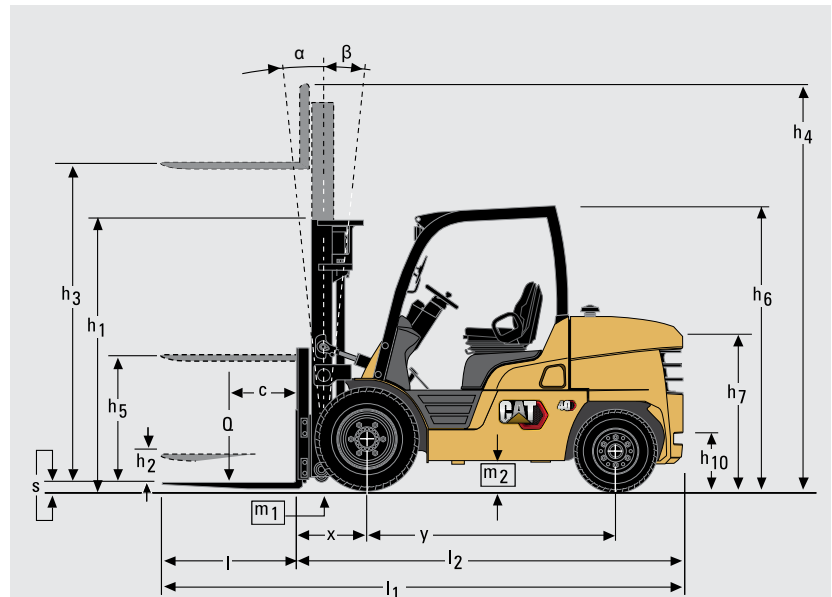
● Standard    ○ Option



For more information about standard and available optional equipment, please contact your dealer.

Characteristics		
1.01	Manufacturer (abbreviation)	
1.02	Manufacturer's model designation	
1.03	Power source: (battery, diesel, LP gas, petrol)	
1.04	Operator type: pedestrian, (operator)-standing, -seated	
1.05	Load capacity	Q (kg)
1.06	Load center distance	c (mm)
1.08	Load distance, axle to fork face	x (mm)
1.09	Wheelbase	y (mm)
Weight		
2.01	Truck weight, without load / including battery (simplex mast, lowest lift height)	kg
2.02	Axle loading with maximum load, front/rear (simplex mast, lowest lift height)	kg
2.03	Axle loading without load, front/rear (simplex mast, lowest lift height)	kg
Wheels, Drive Train		
3.01	Tyres: V=solid, L=pneumatic, SE=solid pneumatic - front/rear	
3.02	Tyre dimensions, front	
3.03	Tyre dimensions, rear	
3.05	Number of wheels, front/rear (x=driven)	
3.06	Track width (center of tyres), front	b10 (mm)
3.07	Track width (center of tyres), rear	b11 (mm)
Dimensions		
4.01	Mast tilt, forwards/backwards	$\partial / \beta$ °
4.02	Height with mast lowered (see tables)	h1 (mm)
4.03	Free lift (see tables)	h2 (mm)
4.04	Lift height (see tables)	h3 (mm)
4.05	Overall height with mast raised	h4 (mm)
4.07	Height to top of overhead guard	h6 (mm)
4.08	Seat height	h7 (mm)
4.12	Tow coupling height	h10 (mm)
4.19	Overall length	l1 (mm)
4.20	Length to fork face (includes fork thickness)	l2 (mm)
4.21	Overall width	b1 / b2 (mm)
4.22	Fork dimensions (thickness, width, length)	s / e / l (mm)
4.23	Fork carriage to DIN 15 173 A/B/no	
4.24	Fork carriage width	b3 (mm)
4.31	Ground clearance under mast, with load	m1 (mm)
4.32	Ground clearance at centre of wheelbase, with load (forks lowered)	m2 (mm)
4.33	Working aisle width with 1000 x1200 mm pallets, crosswise	Ast (mm)
4.34a	Working aisle width with 800 x1200 mm pallets, lengthwise	Ast (mm)
4.35	Turning circle radius	Va (mm)
4.36	Minimum distance between centres of rotation	b13 (mm)
Performance		
5.01	Travel speed, with/without load	km / h
5.02	Lifting speed, with/without load	m / s
5.03	Lowering speed, with/without load	m / s
5.05	Rated drawbar pull, with/without load (@1.6 km/h)	N
5.07	Gradeability, with/without load (@1.6 km/h)	%
5.09	Acceleration time (10 metres) with/without load	s
5.10	Service brakes (mechanical/hydraulic/electric/pneumatic)	
IC Engine		
7.01	Manufacturer / Type	
7.02	Rated output to ISO 1585 (S.A.E. gross)	kW
7.03	Rated speed to DIN 70 020	rpm
7.04	Number of cylinders / cubic capacity	cm <sup>3</sup>
7.05	Fuel consumption according to VDI 60 cycle	l/h / kg/h
7.06	Max torque (S.A.E. gross) @ engine speed	Nm / rpm
Miscellaneous		
8.01	Type of drive control	
8.02	Maximum operating pressure for attachments	bar
8.03	Oil flow for attachments	l / min
8.04	Noise level, value at operator's ear (EN 12053)	dB(A)
8.05	Towing coupling, type DIN 15170	

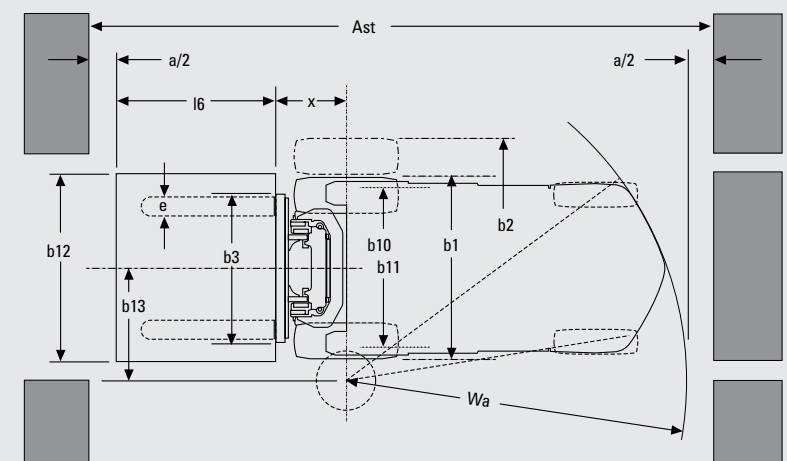
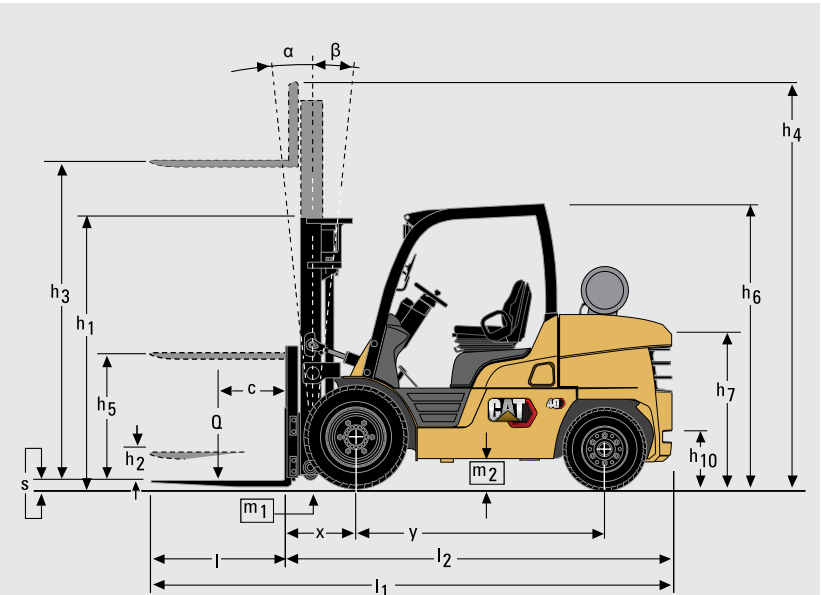
Cat Lift Trucks	Cat Lift Trucks	Cat Lift Trucks	Cat Lift Trucks	Cat Lift Trucks
DP40NT	DP45NT	DP50CNT	DP50NT	DP55NT
Diesel	Diesel	Diesel	Diesel	Diesel
Seated	Seated	Seated	Seated	Seated
4000	4500	5000	5000	5500
500	500	500	600	600
577	577	582	602	602
1850	2000	2000	2150	2150
5920	6330	6850	7300	7640
8960/960	9710/1130	10600/1250	11020/1280	11740/1400
2630/3290	2780/3550	2900/3950	3220/4080	3170/4470
L/L	L/L	L/L	L/L	SE/SE
8.25-15-14PR	300-15-18PR	300-15-18PR	300-15-18PR	300-15-18PR
7.00-12-12PR	7.00-12-12PR	7.00-12-12PR	7.00-12-14PR	7.00-12-14PR
2x/2	2x/2	2x/2	2x/2	2x/2
1175	1175	1175	1175	1175
1180	1180	1180	1180	1180
6/12	6/12	6/12	6/12	6/12
2320	2320	2400	2400	2400
150	150	150	160	160
3300	3300	3300	3300	3300
4430	4430	4430	4430	4580
2250	2250	2250	2250	2250
1082	1082	1082	1082	1082
395	395	395	395	395
4220	4350	4390	4530	4580
3000	3130	3170	3310	3360
1415/1965	1460/1965	1460/1965	1460/1965	1460/1965
50/150/1220	50/150/1220	50/150/1220	60/150/1220	60/150/1220
3A	3A	3A	4A	4A
1190	1190	1190	1190	1190
150	150	150	150	150
227	227	227	227	227
4357	4507	4542	4692	4742
4157	4307	4342	4492	4542
2580	2730	2760	2890	2940
836	903	903	971	971
21.5/22.0	21.0/22.0	21.0/22.0	21.0/22.0	21.0/22.0
0.55/0.61	0.55/0.61	0.47/0.53	0.47/0.53	0.47/0.53
0.5/0.5	0.5/0.5	0.5/0.5	0.5/0.5	0.5/0.5
27000/17400	27000/18700	26500/19400	26500/21800	26000/21300
29/26	26/27	24/26	23/27	21/25
4.20/3.70	4.52/3.87	4.52/3.87	4.52/3.87	4.52/3.87
Hydraulic	Hydraulic	Hydraulic	Hydraulic	Hydraulic
S6S	S6S	S6S	S6S	S6S
57.5	57.5	57.5	57.5	57.5
2300	2300	2300	2300	2300
6/4996	6/4996	6/4996	6/4996	6/4996
7.9 / -	8.1 / -	8.2 / -	8.7 / -	8.9 / -
-	-	-	-	-
Powershift 2/1	Powershift 2/1	Powershift 2/1	Powershift 2/1	Powershift 2/1
191	191	191	191	191
80	80	80	80	80
84	84	84	84	84
Pin	Pin	Pin	Pin	Pin



$Ast = Wa + x + l6 + a$   
 $Ast =$  Working aisle width with load  
 $a =$  Safety clearance (200 mm)  
 $l6 =$  Pallet length (800 or 1000 mm)  
 $b12 =$  Pallet width (1200 mm)

Characteristics		
1.01	Manufacturer (abbreviation)	
1.02	Manufacturer's model designation	
1.03	Power source: (battery, diesel, LP gas, petrol)	
1.04	Operator type: pedestrian, (operator)-standing, -seated	
1.05	Load capacity	Q (kg)
1.06	Load center distance	c (mm)
1.08	Load distance, axle to fork face	x (mm)
1.09	Wheelbase	y (mm)
Weight		
2.01	Truck weight, without load / including battery (simplex mast, lowest lift height)	kg
2.02	Axle loading with maximum load, front/rear (simplex mast, lowest lift height)	kg
2.03	Axle loading without load, front/rear (simplex mast, lowest lift height)	kg
Wheels, Drive Train		
3.01	Tyres: V=solid, L=pneumatic, SE=solid pneumatic - front/rear	
3.02	Tyre dimensions, front	
3.03	Tyre dimensions, rear	
3.05	Number of wheels, front/rear (x=driven)	
3.06	Track width (center of tyres), front	b10 (mm)
3.07	Track width (center of tyres), rear	b11 (mm)
Dimensions		
4.01	Mast tilt, forwards/backwards	$\partial / \beta$ °
4.02	Height with mast lowered (see tables)	h1 (mm)
4.03	Free lift (see tables)	h2 (mm)
4.04	Lift height (see tables)	h3 (mm)
4.05	Overall height with mast raised	h4 (mm)
4.07	Height to top of overhead guard	h6 (mm)
4.08	Seat height	h7 (mm)
4.12	Tow coupling height	h10 (mm)
4.19	Overall length	l1 (mm)
4.20	Length to fork face (includes fork thickness)	l2 (mm)
4.21	Overall width	b1 / b2 (mm)
4.22	Fork dimensions (thickness, width, length)	s / e / l (mm)
4.23	Fork carriage to DIN 15 173 A/B/no	
4.24	Fork carriage width	b3 (mm)
4.31	Ground clearance under mast, with load	m1 (mm)
4.32	Ground clearance at centre of wheelbase, with load (forks lowered)	m2 (mm)
4.33	Working aisle width with 1000 x1200 mm pallets, crosswise	Ast (mm)
4.34a	Working aisle width with 800 x1200 mm pallets, lengthwise	Ast (mm)
4.35	Turning circle radius	Va (mm)
4.36	Minimum distance between centres of rotation	b13 (mm)
Performance		
5.01	Travel speed, with/without load	km / h
5.02	Lifting speed, with/without load	m / s
5.03	Lowering speed, with/without load	m / s
5.05	Rated drawbar pull, with/without load (@1.6 km/h)	N
5.07	Gradeability, with/without load (@1.6 km/h)	%
5.09	Acceleration time (10 metres) with/without load	s
5.10	Service brakes (mechanical/hydraulic/electric/pneumatic)	
IC Engine		
7.01	Manufacturer / Type	
7.02	Rated output to ISO 1585 (S.A.E. gross)	kW
7.03	Rated speed to DIN 70 020	rpm
7.04	Number of cylinders / cubic capacity	cm <sup>3</sup>
7.05	Fuel consumption according to VDI 60 cycle	l/h / kg/h
7.06	Max torque (S.A.E. gross) @ engine speed	Nm / rpm
Miscellaneous		
8.01	Type of drive control	
8.02	Maximum operating pressure for attachments	bar
8.03	Oil flow for attachments	l / min
8.04	Noise level, value at operator's ear (EN 12053)	dB(A)
8.05	Towing coupling, type DIN 15170	

Cat Lift Trucks	Cat Lift Trucks	Cat Lift Trucks	Cat Lift Trucks	Cat Lift Trucks
GP40NT	GP45NT	GP50CNT	GP50NT	GP55NT
LPG	LPG	LPG	LPG	LPG
Seated	Seated	Seated	Seated	Seated
4000	4500	5000	5000	5500
500	500	500	600	600
577	577	582	602	602
1850	2000	2000	2150	2150
5860	6270	6780	7240	7570
8940/920	9680/1090	10570/1210	10990/1250	11710/1360
2610/3250	2750/3520	2870/3920	3190/4050	3130/4440
L/L	L/L	L/L	L/L	SE/SE
8.25-15-14PR	300-15-18PR	300-15-18PR	300-15-18PR	300-15-8.00
7.00-12-14PR	7.00-12-14PR	7.00-12-14PR	7.00-12-14PR	7.00-12-5.00
2x/2	2x/2	2x/2	2x/2	2x/2
1175	1175	1175	1175	1175
1180	1180	1180	1180	1180
6/12	6/12	6/12	6/12	6/12
2320	2320	2400	2400	2400
150	150	150	160	160
3300	3300	3300	3300	3300
3920	3920	4000	4000	4000
2250	2250	2250	2250	2250
1082	1082	1082	1082	1082
395	395	395	395	395
4220	4350	4390	4530	4580
3000	3130	3170	3310	3360
1415/1965	1460/1965	1460/1965	1460/1965	1460/1965
50/150/1220	50/150/1220	50/150/1220	60/150/1220	60/150/1220
3A	3A	3A	4A	4A
1190	1190	1190	1190	1190
150	150	150	150	150
227	227	227	227	227
4357	4507	4542	4692	4742
4157	4307	4342	4492	4542
2580	2730	2760	2890	2940
836	903	903	971	971
GCT GK45	GCT GK45	GCT GK45	GCT GK45	GCT GK45
72	72	72	72	72
2450	2450	2450	2450	2450
6/4452	6/4452	6/4452	6/4452	6/4452
- / 5.3	- / 5.9	- / 6.2	- / 6.3	- / 7.1
288 / 1600	288 / 1600	288 / 1600	288 / 1600	288 / 1600
Powershift 2/1	Powershift 2/1	Powershift 2/1	Powershift 2/1	Powershift 2/1
191	191	191	191	191
80	80	80	80	80
84	84	84	84	84
Pin	Pin	Pin	Pin	Pin



$Ast = Wa + x + l6 + a$   
 $Ast$  = Working aisle width with load  
 $a$  = Safety clearance (200 mm)  
 $l6$  = Pallet length (800 or 1000 mm)  
 $b12$  = Pallet width (1200 mm)



DP/GP50NT							
Mast Type	h3 mm	h1 mm	h4 (mm)		h2/h5 (mm)		Tilt angle (fwd - back)
			With Std. backrest	Without Std. backrest	With Std. backrest	Without Std. backrest	
Simplex	3000	2250	4280	4030	160	160	6°/12°
	3300	2400	4580	4330	160	160	6°/12°
	3700	2600	4980	4730	160	160	6°/12°
	4000	2850	5280	5030	160	160	6°/12°
	4500	3100	5780	5530	160	160	6°/6°
	5000	3350	6280	6030	160	160	6°/6°
	5500	3600	6780	6530	160	160	6°/6°
	6000	3850	7280	7030	160	160	6°/6°
Duplex	2970	2250	4250	4000	1030	1280	6°/12°
	3280	2400	4560	4310	1180	1430	6°/12°
	4080	2850	5360	5110	1630	1880	6°/12°
Triplex	3700	2050	4980	4740	830	1080	6°/6°
	4040	2170	5320	5080	950	1200	6°/6°
	4310	2260	5590	5350	1040	1290	6°/6°
	4750	2400	6030	5790	1180	1430	6°/6°
	5050	2500	6330	6090	1280	1530	6°/6°
	5500	2650	6780	6540	1430	1680	6°/6°
	6000	2850	7280	7040	1630	1880	6°/6°

DP/GP50NT PNEUMATIC
Q @ c = 600mm kg
5000
5000
5000
5000
5000
5000
5000
4900*
4100*
5000
5000
5000
5000
5000
5000
5000
4900*
4300*

DP/GP50NT SOLID PNEUMATIC
Q @ c = 600mm kg
5000
5000
5000
5000
5000
5000
5000
5000
4900
5000
5000
5000
5000
5000
5000
5000
5000
4800

## Mast Performance and Capacity

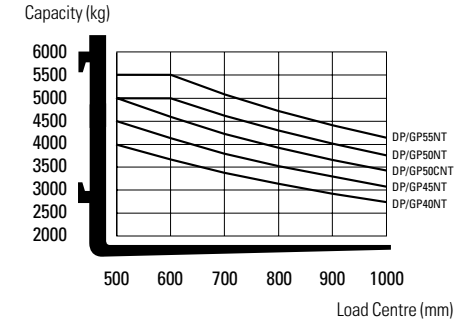
- h1 Height with mast lowered
- h2 Standard free lift
- h3 Lift height
- h4 Height with mast raised
- h5 Full free lift
- Q Lifting capacity, rated load
- c Load centre (distance)

\* Truck equipped with dual tyres. Consult your dealer for maximum back-tilt allowed, to obtain the capacities specified.

(i) Capacities shown in brackets for the 5.5 tonnes model show lower capacities compared to 5.0 tonne model.

## Capacity vs. Load Distance

Simplex - h3 = 4000mm



DP/GP55NT							
Mast Type	h3 mm	h1 mm	h4 (mm)		h2/h5 (mm)		Tilt angle (fwd - back)
			With Std. backrest	Without Std. backrest	With Std. backrest	Without Std. backrest	
Simplex	3000	2250	4280	4030	160	160	6°/12°
	3300	2400	4580	4330	160	160	6°/12°
	3700	2600	4980	4730	160	160	6°/12°
	4000	2850	5280	5030	160	160	6°/12°
	4500	3100	5780	5530	160	160	6°/6°
	5000	3350	6280	6030	160	160	6°/6°
	5500	3600	6780	6530	160	160	6°/6°
	6000	3850	7280	7030	160	160	6°/6°
Duplex	2970	2250	4250	4000	1030	1280	6°/12°
	3280	2400	4560	4310	1180	1430	6°/12°
	4080	2850	5360	5110	1630	1880	6°/12°
Triplex	3700	2050	4980	4740	830	1080	6°/6°
	4040	2170	5320	5080	950	1200	6°/6°
	4310	2260	5590	5350	1040	1290	6°/6°
	4750	2400	6030	5790	1180	1430	6°/6°
	5050	2500	6330	6090	1280	1530	6°/6°
	5500	2650	6780	6540	1430	1680	6°/6°
	6000	2850	7280	7040	1630	1880	6°/6°

DP/GP55NT PNEUMATIC
Q @ c = 600mm kg
5500
5500
5500
5500
5500
5500*
-
-
5500
5500
5500
5500
5500
5500
5500
5500*
-
-

DP/GP55NT SOLID PNEUMATIC
Q @ c = 600mm kg
5500
5500
5500
5500
5500
5500
5500
5500
5350*
5500
5500
5500
5500
5500
5500
5500
5500
-

[info@catlifttruck.com](mailto:info@catlifttruck.com) | [www.catlifttruck.com](http://www.catlifttruck.com)

CEC2713AME-D(06/26) © 2026 Logisnext Europe B.V. All rights reserved. CAT, CATERPILLAR, LET'S DO THE WORK, and their respective logos "Caterpillar Corporate Yellow", the "Power Edge" and Cat "Modern Hex" trade dress as well as corporate and product identity used herein are trademarks of Caterpillar used under license and may not be used without permission from Caterpillar. Specifications are indicative and may vary depending on operating conditions. Failure to assess all factors may result in performance deviations. All relevant sales support materials and technical expertise of the official distributor must be considered when identifying the best product/solution. Options and technical details may change without notice. Full legal notice and up-to-date product information: [www.catlifttruck.com](http://www.catlifttruck.com).



DOWNLOAD  
BROCHURE



WATCH  
VIDEOS



DOWNLOAD  
OUR APP

