



DP20P3
DP25P3
DP30P3
DP35P3

GP15P
GP18P
GP20CP
GP20P
GP25P
GP30P
GP35P

**DURABLE,
CONSISTENT, RUGGED**

SPECIFICATIONS

ENGINE POWERED LIFT TRUCKS 1.5 - 3.5 TONNES



DURABLE, CONSISTENT, RUGGED...

OUR RANGE OF SMALLER ENGINE-POWERED TRUCKS OFFERS AN EXCELLENT BLEND OF POWER AND PERFORMANCE WITH THE ADVANTAGE OF LOW FUEL CONSUMPTION - FOR EASY AND ECONOMICAL USE.



With a variety of load capacities, frame types, mast designs and engine sizes to choose from, you can be sure of the ideal configuration to suit your needs.

Ideal for industrial applications, the trucks achieve outstanding traction on sloping or slippery surfaces, with solid pneumatic tyres also providing excellent operator comfort.



Our latest Stage V diesel engine, with its advanced exhaust gas technology, meets stringent EU regulations. Its built-in warning system and easy maintenance procedures help to keep your lift truck in service and minimise your costs.



A wide range of optional features allows you to match the specification of your Cat[®] lift truck to your application. A double air filter, for example, can be fitted to provide increased engine protection in dusty applications such as in mills and brickyards, while factory-fitted cabin options keep your operators comfortable and productive in extreme weather conditions.

LOWER COST OF OWNERSHIP

- Modern design techniques in combination with long component life result in a long service interval which reduces total cost of ownership.
- Vehicle Control Module manages various truck and operator functions, allowing easy troubleshooting and pinpointing of problems.
- Colour LCD display with Bluetooth connectivity provides extensive information on truck operation, maintenance state and soot level (diesel) - with indication of service requirements to prevent unexpected downtime and costs due to unscheduled servicing and repairs.
- Bluetooth connectivity allows wireless connection to TruckTool for servicing and touchless operator authentication using a smartphone.
- LED front work lights and front/rear combination lights reduce energy consumption and maintenance costs.
- Robust and durable chassis is fitted with full belly guard to protect engine compartment from dust, water and dirt.

UNMATCHED PRODUCTIVITY

- Powerful, proven industrial engine offers state-of-the-art LPG technology, including electronic engine management system and 3-way catalytic converter, for great performance, low noise and emission levels, and efficient fuel usage.
- Fully floating powertrain layout lowers centre of gravity, increases truck stability and maximises residual lifting capacities.
- Reliable, high performance, electronically controlled Stage V diesel engine delivers low emission levels with low fuel consumption.
- Compact design means this range is also suitable for use in aisles with tight spaces.
- Mast carriage features six bearings, increasing durability and lifting speed, while powerful hydraulic system offers high residual capacities for easy handling of heavier loads.
- Optional factory-fitted panel cabin keeps the elements out, without compromising visibility, combining form and function in a design which keeps the truck performing in the most extreme of temperatures and in wet environments.

SAFETY AND ERGONOMICS

- Presence Detection System (PDS) prevents truck operation when operator is not seated.
- Low noise levels combine with the ergonomic and comfortable Grammer seat to help maintain operator concentration and reduce fatigue during long shifts.
- Fingertip hydraulic controls are mounted on a fully adjustable armrest for optimum load handling and easy manoeuvrability.
- Automotive-style pedal layout allows easy and comfortable operation.
- Adjustable steering column with memory position can be set according to operator's preference for comfortable operation.
- Low step in chassis enables easy on and off access.
- Good all-round visibility and ergonomic layout of all controls improves comfort and minimises operator fatigue.
- Hand grip mounted at the rear of the overhead guard, with a horn button, increases safety and reduces back strain and fatigue in applications involving repetitive reversing.



STANDARD EQUIPMENT AND OPTIONS

GENERAL	DIESEL		LP GAS			
	DP20-25P3	DP30-35P3	GP15-18P	GP20CP	GP20-25P	GP30-35P
Dust proof kit	○	○	○	○	○	○
Line filter for torque converter	○	○	○	○	○	○
Universal joint cover powertrain	○	○	○	○	○	○
LPG bracket removed	-	-	○	○	○	○
LPG Swing down bracket, no tank	-	-	○	○	○	○
Tilt cylinder boot kit	-	-	○	○	○	○
Belly plate (under cover)	●	●	●	●	●	●
Large capacity battery	-	-	○	○	○	○
Fire extinguisher	○	○	○	○	○	○
Equipment Bar	○	○	○	○	○	○
HYDRAULIC						
3-way control valve MC	●	●	●	●	●	●
3-way control valve FC	○	○	○	○	○	○
4-way control valve MC	○	○	○	○	○	○
4-way control valve FC	○	○	○	○	○	○
5-way control valve MC	○	○	-	-	○	○
5-way control valve FC	○	○	-	-	○	○
Single control lever MC	○	○	○	○	○	○
Dual Joysticks	○	○	○	○	○	○
Automatic tilt centering via the F2 button on fingertip controller	○	○	○	○	○	○
F2 Double action button for clamp release (*cannot be combined with Tilt Horizontal control)	○	○	○	○	○	○
Hydraulic accumulator	○	○	○	○	○	○
MAST, FORKS AND CARRIAGE						
Loose mast	○	○	○	○	○	○
Heavy Load side roller (*Cannot be combined with an integral sideshifter)	○	○	○	○	○	○
Side shifter 920 mm	-	-	○	○	-	-
Side shifter 1000 mm	○	○	-	-	○	○
Integral side shifter 920 mm	-	-	○	○	-	-
Integral side shifter 1000 mm	○	○	○	-	○	○
Hook-on Side shifting Fork Positioner 920 mm	○	○	○	-	○	○
Hook-on Side shifting Fork Positioner 1000 mm	○	○	○	-	○	○
Fork deletion	○	○	○	○	○	○
ELECTRIC						
Backup handle with horn button	●	●	●	●	●	●
Speed limiter	●	●	●	●	●	●
Indicator kit	○	○	○	○	○	○
LED light set	●	●	●	●	●	●
LED rear work light	○	○	○	○	○	○
Load weight indicator	●	●	●	●	●	●
Strobe light (orange)	○	○	○	○	○	○
FNR switch on adjustable armrest * (*Standard on FC models)	○	○	○	○	○	○
"Blue point" rear light	○	○	○	○	○	○
Lights on mast (only available with Triplex mast)	○	○	-	-	○	○
USB port	○	○	○	○	○	○
LPG low level warning	-	-	○	○	○	○

● Standard ○ Option

Contact your dealer for additional standard and optional equipment.

STANDARD EQUIPMENT AND OPTIONS (CONTINUED)

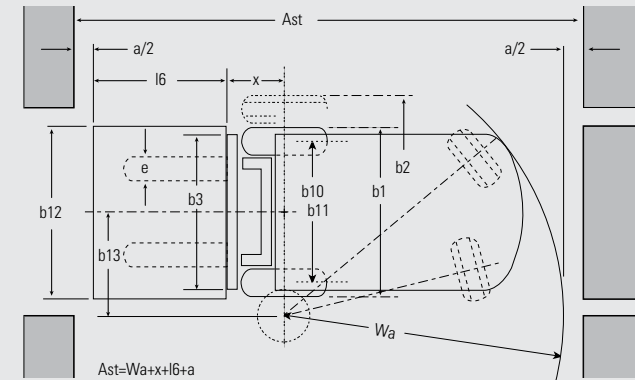
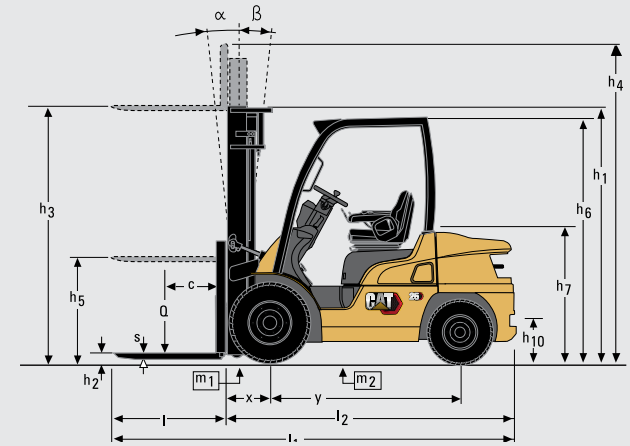
	DIESEL		LP GAS			
	DP20-25P3	DP30-35P3	GP15-18P	GP20CP	GP20-25P	GP30-35P
OHG AND CABIN						
Grammer MSG 65 Vinyl seat	●	●	●	●	●	●
Grammer MSG 65 Cloth seat	○	○	○	○	○	○
Grammer MSG 65 with heater	○	○	○	○	○	○
Grammer MSG75 air suspension Cloth seat	○	○	○	○	○	○
Grammer MSG75 air suspension Vinyl seat	○	○	○	○	○	○
Rear view mirrors (not available with Deluxe Cabin)	●	●	●	●	●	●
Tilt steering column with memory position	●	●	●	●	●	●
Convenience tray (* not available for FC models)	○	○	○	○	○	○
Acrylic rain guard	○	○	○	○	○	○
Deluxe Cabin	○	○	○	○	○	○
Panel cabin Front screen with wiper + roof	○	○	-	-	○	○
Panel cabin rear screen	○	○	-	-	○	○
Panel cabin PVC doors, LH & RH	○	○	-	-	○	○
Panel cabin steel doors	○	○	-	-	○	○
TYRES						
Solid pneumatic tyres	●	●	●	●	●	●
Pneumatic tyres	○	○	○	-	○	○
Solid pneumatic dual drive tyres	○	○	-	-	○	○
Pneumatic dual drive tyres	○	○	-	-	○	○
Non-marking solid tires	○	○	○	○	○	○
ENVIRONMENT						
Single element air cleaner	●	●	-	-	-	-
Double element air cleaner	○	○	●	●	●	●
Elevated exhaust	○	○	-	-	-	-

● Standard ○ Option



Contact your dealer for additional standard and optional equipment.

Characteristics			Cat Lift Trucks	Cat Lift Trucks	Cat Lift Trucks	Cat Lift Trucks
Weight						
1.1	Manufacturer (abbreviation)		DP20P3	DP25P3	DP30P3	DP35P3
1.2	Manufacturer's model designation		Diesel	Diesel	Diesel	Diesel
1.3	Power source: (battery, diesel, LPG, petrol)		Seated	Seated	Seated	Seated
1.4	Operator type: pedestrian, (operator) - standing, - seated		2000	2500	3000	3500
1.5	Load capacity	Q (kg)	500	500	500	500
1.6	Load centre distance	c (mm)	455	460	495	495
1.8	Load distance, axle to fork face	x (mm)	1600	1600	1700	1700
1.9	Wheelbase	y (mm)				
Wheels, Drive Train						
2.1	Truck weight, without load / including battery (simplex mast, lowest lift height)	kg	SE / SE	SE / SE	SE / SE	SE / SE
2.2	Axle loading with maximum load, front / rear (simplex mast, lowest lift height)	kg	7.00-12	7.00-12	28x9-15	250-15
2.3	Axle loading without load, front / rear (simplex mast, lowest lift height)	kg	6.00-9	6.00-9	6.50-10	6.50-10
3.1	Tyres: V = solid, L = pneumatic, SE = solid pneumatic - front / rear		2x / 2	2x / 2	2x / 2	2x / 2
3.2	Tyre dimensions, front		960	960	1060	1060
3.3	Tyre dimensions, rear		980	980	980	980
3.5	Number of wheels, front / rear (x = driven)					
3.6	Track width (centre of tyres), front	b10 (mm)				
3.7	Track width (centre of tyres), rear	b11 (mm)				
Dimensions						
4.1	Mast tilt, forwards/backwards	∂/β °	6/10	6/10	6/10	6/10
4.2	Height with mast lowered (see tables)	h1 (mm)	2145	2145	2165	2280
4.3	Free lift (see tables)	h2 (mm)	140	140	140	140
4.4	Lift height (see tables)	h3 (mm)	3300	3300	3300	3300
4.5	Overall height with mast raised	h4 (mm)	4355	4355	4355	4355
4.7	Height to top of overhead guard	h6 (mm)	2145	2145	2165	2175
4.8	Seat height	h7 (mm)	940	940	990	990
4.12	Tow coupling height	h10 (mm)	310	310	330	340
4.19	Overall length	l1 (mm)	3555	3630	3805	3865
4.20	Length to fork face (includes fork thickness)	l2 (mm)	2485	2560	2735	2795
4.21	Overall width	b1/b2 (mm)	1150 / 1640	1150 / 1640	1275/1710	1290/1710
4.22	Fork dimensions (thickness, width, length)	s / e / l (mm)	40x100x1100	40x100x1100	45x120x1100	45x120x1100
4.23	Fork carriage to DIN 15 173 A/B/no		2A	2A	3A	3A
4.24	Fork carriage width	b3 (mm)	1000	1000	1000	1000
4.31	Ground clearance under mast, with load	m1 (mm)	115	115	135	150
4.32	Ground clearance at center of wheelbase, with load (forks lowered)	m2 (mm)	135	135	165	170
4.33	Working aisle width with 1000 x1200 mm pallets, crosswise	Ast (mm)	3855	3890	4075	4135
4.34a	Working aisle width with 800 x1200 mm pallets, crosswise	Ast (mm)	3655	3690	3875	3935
4.34b	Working aisle width with 800 x1200 mm pallets, lengthwise	Ast (mm)	4055	4090	4275	4335
4.35	Turning circle radius	Wa (mm)	2200	2230	2380	2440
4.36	Minimum distance between centers of rotation	b13 (mm)	715	715	780	780
Performance						
5.1	Travel speed, with / without load	km / h	16.5/18.0	16.0/17.5	16.0/17.5	16.5/18.0
5.2	Lifting speed, with / without load	m / s	0.61 / 0.64	0.61 / 0.64	0.49 / 0.50	0.41 / 0.42
5.3	Lowering speed, with / without load	m / s	0.51 / 0.43	0.51 / 0.43	0.51 / 0.42	0.43 / 0.30
5.5	Rated drawbar pull, with / without load	N	16200/15900	16100/15800	15800/15800	14800/15000
5.6	Maximum drawbar pull, with / without load (5 min short duty)	N	-/-	-/-	-/-	-/-
5.7	Gradeability, with / without load	%	31/52	27/47	22/39	18/33
5.8	Maximum gradeability with / without load	%	-/-	-/-	-/-	-/-
5.9	Acceleration time (10 metres) with / without load	s	-/-	-/-	-/-	-/-
5.10	Service brakes (mechanical / hydraulic / electric / pneumatic)		Hydraulic	Hydraulic	Hydraulic	Hydraulic
IC Engine						
7.1	Manufacturer / Type		D04EG	D04EG	D04EG	D04EG
7.2	Rated / Nominal output to ISO 1585**	kW	36.0	36.0	36.0	36.0
7.3	Rated speed to DIN 70 020	rpm	2250	2250	2250	2250
7.4	Number of cylinders / cubic capacity	cm ³	4 / 3331	4 / 3331	4 / 3331	4 / 3331
7.6a	Max torque	Nm	177	177	177	177
7.7a	Max torque at engine speed	rpm	1800	1800	1800	1800
Miscellaneous						
8.1	Type of drive control		Powershift 1/1	Powershift 1/1	Powershift 1/1	Powershift 1/1
10.1	Maximum operating pressure for attachments	bar	180	180	180	180
10.2	Oil flow for attachments	l / min	75	75	73	73
10.7	Noise level, value at operator's ear (EN 12053)	dB (A)	78	78	78	78
10.8	Towing coupling design / DIN type, ref.		Pin	Pin	Pin	Pin



$$Ast = Wa + x + l6 + a$$

Ast = Working aisle width with load

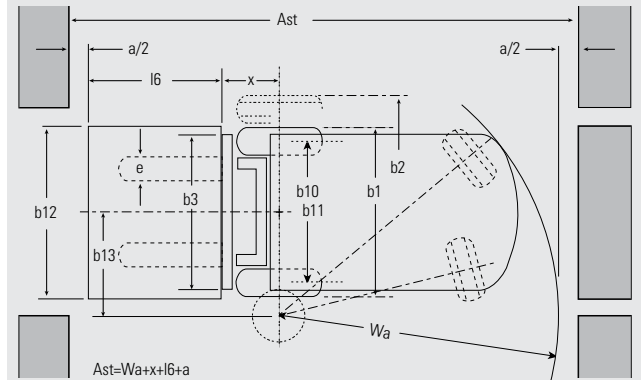
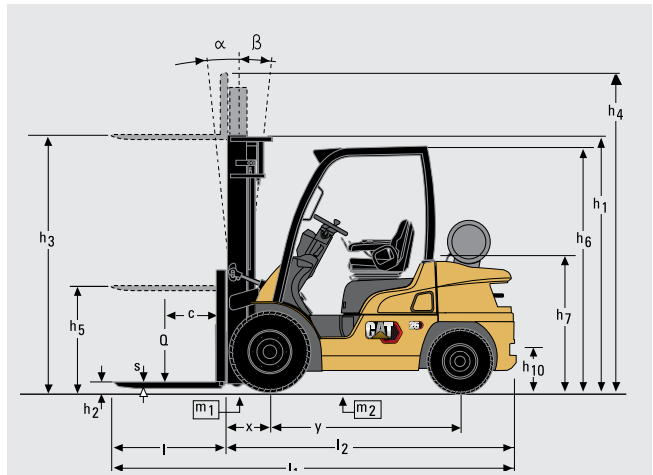
a = Safety clearance (200 mm)

l6 = Pallet length (800 or 1000 mm)

b12 = Pallet width (1200 mm)

Characteristics		
1.1	Manufacturer (abbreviation)	
1.2	Manufacturer's model designation	
1.3	Power source: (battery, diesel, LPG, petrol)	
1.4	Operator type: pedestrian, (operator) - standing, - seated	
1.5	Load capacity	Q (kg)
1.6	Load centre distance	c (mm)
1.8	Load distance, axle to fork face	x (mm)
1.9	Wheelbase	y (mm)
Weight		
2.1	Truck weight, without load / including battery (simplex mast, lowest lift height)	kg
2.2	Axle loading with maximum load, front / rear (simplex mast, lowest lift height)	kg
2.3	Axle loading without load, front / rear (simplex mast, lowest lift height)	kg
Wheels, Drive Train		
3.1	Tyres: V = solid, L = pneumatic, SE = solid pneumatic - front / rear	
3.2	Tyre dimensions, front	
3.3	Tyre dimensions, rear	
3.5	Number of wheels, front / rear (x = driven)	
3.6	Track width (centre of tyres), front	b10 (mm)
3.7	Track width (centre of tyres), rear	b11 (mm)
Dimensions		
4.1	Mast tilt, forwards/backwards	α/β °
4.2	Height with mast lowered (see tables)	h1 (mm)
4.3	Free lift (see tables)	h2 (mm)
4.4	Lift height (see tables)	h3 (mm)
4.5	Overall height with mast raised	h4 (mm)
4.7	Height to top of overhead guard	h6 (mm)
4.8	Seat height	h7 (mm)
4.12	Tow coupling height	h10 (mm)
4.19	Overall length	l1 (mm)
4.20	Length to fork face (includes fork thickness)	l2 (mm)
4.21	Overall width	b1/b2 (mm)
4.22	Fork dimensions (thickness, width, length)	s / e / l (mm)
4.23	Fork carriage to DIN 15 173 A/B/no	
4.24	Fork carriage width	b3 (mm)
4.31	Ground clearance under mast, with load	m1 (mm)
4.32	Ground clearance at center of wheelbase, with load (forks lowered)	m2 (mm)
4.33	Working aisle width with 1000 x1200 mm pallets, crosswise	Ast (mm)
4.34a	Working aisle width with 800 x1200 mm pallets, crosswise	Ast (mm)
4.34b	Working aisle width with 800 x1200 mm pallets, lengthwise	Ast (mm)
4.35	Turning circle radius	Wa (mm)
4.36	Minimum distance between centers of rotation	b13 (mm)
Performance		
5.1	Travel speed, with / without load	km / h
5.2	Lifting speed, with / without load	m / s
5.3	Lowering speed, with / without load	m / s
5.5	Rated drawbar pull, with / without load	N
5.6	Maximum drawbar pull, with / without load (5 min short duty)	N
5.7	Gradeability, with / without load	%
5.8	Maximum gradeability with / without load	%
5.9	Acceleration time (10 metres) with / without load	s
5.10	Service brakes (mechanical / hydraulic / electric / pneumatic)	
IC Engine		
7.1	Manufacturer / Type	
7.2	Rated / Nominal output to ISO 1585**	kW
7.3	Rated speed to DIN 70 020	rpm
7.4	Number of cylinders / cubic capacity	cm ³
7.6a	Max torque	Nm
7.7a	Max torque at engine speed	rpm
Miscellaneous		
8.1	Type of drive control	
10.1	Maximum operating pressure for attachments	bar
10.2	Oil flow for attachments	l / min
10.7	Noise level, value at operator's ear (EN 12053)	dB (A)
10.8	Towing coupling design / DIN type, ref.	

Cat Lift Trucks	Cat Lift Trucks	Cat Lift Trucks	Cat Lift Trucks	Cat Lift Trucks	Cat Lift Trucks	Cat Lift Trucks
GP15P	GP18P	GP20CP	GP20P	GP25P	GP30P	GP35P
LPG	LPG	LPG	LPG	LPG	LPG	LPG
Seated	Seated	Seated	Seated	Seated	Seated	Seated
1500	1750	2000	2000	2500	3000	3500
500	500	500	500	500	500	500
400	400	415	455	460	495	495
1400	1400	1400	1600	1600	1700	1700
2490	2690	3010	3300	3600	4240	4630
3510/460	3870/540	4320/660	4600/670	5390/680	6470/770	7180/950
1040/1430	990/1670	1010/1970	1410/1860	1390/2180	1710/2530	1630/3000
SE / SE	SE / SE	SE / SE	SE / SE	SE / SE	SE / SE	SE / SE
6.50-10	6.50-10	6.50-10	7.00-12	7.00-12	28x9-15	250-15
5.00-8	5.00-8	5.00-8	6.00-9	6.00-9	6.50-10	6.50-10
2x / 2	2x / 2	2x / 2	2x / 2	2x / 2	2x / 2	2x / 2
890	890	890	960	960	1060	1060
900	900	900	980	980	980	980
6/10	6/10	6/10	6/10	6/10	6/10	6/10
2140	2140	2140	2145	2145	2165	2280
115	115	115	140	140	140	140
3300	3300	3300	3300	3300	3300	3300
4355	4355	4355	4355	4355	4355	4355
2140	2140	2140	2145	2145	2165	2175
930	930	930	940	940	990	990
290	290	290	310	310	330	340
3330	3370	3425	3555	3630	3805	3865
2260	2300	2355	2485	2560	2735	2795
1065/-	1065/-	1065/-	1150 / 1640	1150 / 1640	1275/1710	1290/1710
35x100x1100	35x100x1100	40x100x1100	40x100x1100	40x100x1100	45x120x1100	45x120x1100
2A	2A	2A	2A	2A	3A	3A
920	920	920	1000	1000	1000	1000
110	110	110	115	115	135	150
135	135	135	135	135	165	170
3550	3580	3635	3855	3890	4075	4135
3350	3380	3435	3655	3690	3875	3935
3750	3780	3835	4055	4090	4275	4335
1950	1980	2020	2200	2230	2380	2440
555	555	555	715	715	780	780
Hydraulic	Hydraulic	Hydraulic	Hydraulic	Hydraulic	Hydraulic	Hydraulic
EK21E	EK21E	EK21E	EK21E	EK21E	EK25E	EK25E
43	43	43	43	43	47	47
2700	2700	2700	2700	2700	2700	2700
4 / 2065	4 / 2065	4 / 2065	4 / 2065	4 / 2065	4 / 2488	4 / 2488
161	161	161	161	161	190	190
1800	1800	1800	1800	1800	1600	1600
Powershift 1/1	Powershift 1/1	Powershift 1/1	Powershift 1/1	Powershift 1/1	Powershift 1/1	Powershift 1/1
180	180	180	180	180	180	180
60	60	60	73	73	73	73
79	79	79	79	79	79	79
Pin	Pin	Pin	Pin	Pin	Pin	Pin



$$Ast = Wa + x + l6 + a$$

Ast = Working aisle width with load

a = Safety clearance (200 mm)

l6 = Pallet length (800 or 1000 mm)

b2 = Pallet width (1200 mm)

