

DP180NE
DP200NE
DP230NE



HIGH-STRENGTH HANDLING

SPECIFICATIONS

ENGINE POWERED LIFT TRUCKS 18 - 23 TONNES



HIGH-STRENGTH HANDLING

MEET OUR STRONG AND DURABLE 18 TO 23 TONNE DIESEL COUNTERBALANCE FORKLIFTS. POWERFULLY EQUIPPED TO LIFT, TRANSPORT AND POSITION HUGE LOADS – QUICKLY AND PRECISELY. THEY OFFER HIGH LEVELS OF LIFTING SPEED, TRACTION, GRADEABILITY AND DRIVING SATISFACTION. RESPONSIVE POWERSHIFT TRANSMISSION, TURBOCHARGED ENGINE POWER AND FULLY HYDROSTATIC ASSISTED STEERING ARE JUST PART OF THE EXPERIENCE. EXCELLENT COMFORT AND ERGONOMICS FURTHER OPTIMISE DRIVER PRODUCTIVITY.



Typical applications include:

- Empty container handling
- Stevedoring
- Metal industries
- Lumber
- Concrete, stone, clay and glass
- Industrial machinery and equipment
- Distribution centres
- Brick and stone

Our engine is amongst the strongest, fastest and most efficient in its class. It combines with smooth, three-speed automatic transmission to meet every need effectively. Fully hydrostatic assisted steering, a small turning circle and electronic forward-reverse direction changes, without stopping, enable agile manoeuvring.



The spacious driver compartment gives clear all-round views. From an adjustable, swivelling, full-suspension seat, ergonomically arranged, low-effort controls are easy to reach. Noise and vibration are minimised by shock-absorbing features. A floating weatherproof cabin and other high-comfort features are optionally available.



These diesel forklifts are built for long life and non-stop action – whatever the conditions. Their structures, systems and components are resistant to damage and wear. They also require minimal maintenance. The central lubrication option is just one example of our time-saving design.

LOWER COST OF OPERATION

- Robust steel frame designed using Finite Element Analysis gives a durable structure whose low centre of gravity also enhances residual capacity.
- Fully floating drive axle adds extra durability and capacity compared to semi- or non-floating alternatives.
- Steer axle construction as a single solid unit maximises strength and rigidity.
- Dependable engine and strong resistance of all truck components to damage and wear helps minimise repair and service bills.
- Wet multi-disc parking brake is highly durable and maintenance-free.
- Double element air cleaner protects engine from dirty intake air, even in the harshest environments.
- Intuitive display ensures awareness of truck's electrical and mechanical conditions, encouraging careful use.
- Easy and quick access to all areas for routine checks and maintenance keeps truck in sound working condition, saves time and reduces expense.
- Central lubrication system option saves time by using a manual pump to grease main components from one point.
- LED lights give low energy consumption, long life and robust resistance to vibrations.
- Automatic transmission mode select switch can be set to 'economy' for lower fuel consumption.



UNMATCHED PRODUCTIVITY

- Advanced engine is designed for both strength and speed – enabling fast lifting and handling of massive loads, as well as high traction and gradient performance.
- Automatic transmission in drive train converts engine power directly into torque, with three forward and three reverse speeds, to tackle heavy-duty applications effectively.
- Low-speed torque delivers controlled but powerful acceleration for maximum productivity, while fast-response turbocharger further enhances driver experience and output.
- Automatic transmission mode select switch can be set to 'power' for highest performance.
- Design of frame and counterweight optimises weight distribution and residual capacity for strong lifting.
- Large fuel tank capacity prolongs operating time per refuel and reduces risk of running out during shifts.

SAFETY AND ERGONOMICS

- Noise and vibration limitation features include rubber-mounted key components, fully insulated steel engine hood and helical transmission gears.
- Conveniently placed grab bars and steps ease access to spacious, comfortable operator compartment with ergonomically arranged controls and great all-round visibility.
- Tilttable steering column, adjustable full-suspension seat and generous legroom allow each user to find the perfect driving position.
- Seat swivel function gives added comfort when entering and exiting the cab, and when turning to look behind.
- Optional floating weatherproof cabin is mounted with shock absorbers and can be fitted with further comfort options, including high-capacity air conditioner, heater and defroster, to keep driver productive even in extreme conditions.
- Pillarless weatherproof cabin design eliminates blind spots.
- Counterweight design allows small turning circle and clear view to the rear for precise manoeuvring – aided by rear-view mirrors.
- Mast with narrow channels and small-diameter lift cylinders increases forward vision and uses six load rollers with side rollers to achieve high load stability.
- Fully hydrostatic assisted steering via small-diameter steering wheel ensures accurate and rapid response with little effort.
- Electrically controlled direction change lever permits easy and smooth shifting between forward and reverse travel, without removing hands from steering wheel, at any speed up to 4.0 km/h.
- Turn signal lever combined with light switch adds convenience (and returns to neutral when wheels are straightened).
- Presence Detection System (PDS) gives audible warning if seat belt is not fastened and prevents all travel and hydraulic movement if operator is not correctly seated.
- Electrically controlled parking brake switch secures truck with minimal effort.
- Brake air drier removes moisture from compressed air to reduce failure risk and – in cold weather – prevents freezing of brake line.
- Neutral safety lock device prevents engine from starting if direction lever is in forward or reverse position.
- LED lighting is standard, including headlights and rear combination of turn signal, tail, stop, reverse and side lights, for maximum vision and safety.
- High-volume reversing buzzer option offers alternative to standard unit for noisy workplaces.

STANDARD EQUIPMENT AND OPTIONS

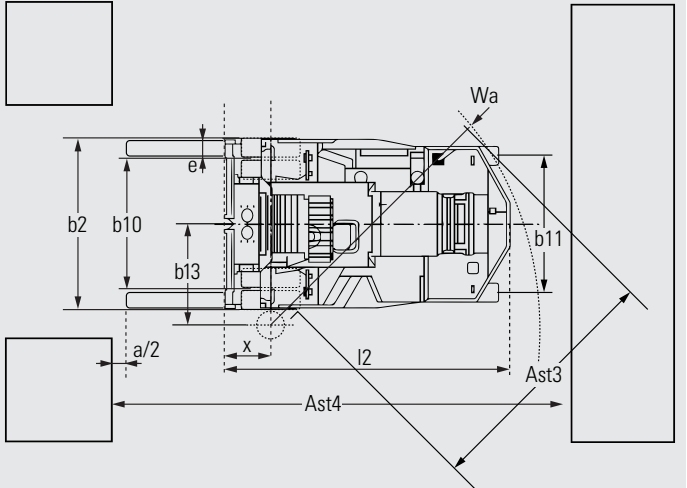
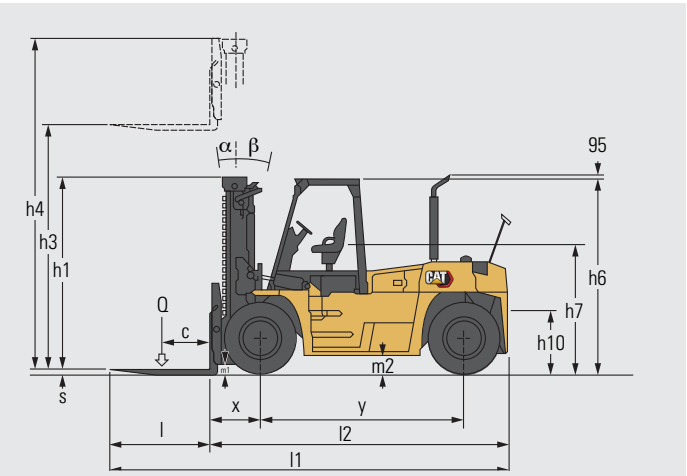
	DP180NE	DP200NE	DP230NE
GENERAL			
Cyclopack type double element air cleaner	●	●	●
Electric horn and reversing buzzer	●	●	●
Hydraulic/pneumatic brakes, with power booster and air dryer	●	●	●
Coolant recovery system	●	●	●
Drawbar pin	●	●	●
Diesel engine with turbo charger	●	●	●
Engine auto glow and after glow system	●	●	●
Cylinder type bonnet latch	●	●	●
Overhead muffler	●	●	●
Cartridge type air, fuel, engine oil, converter oil and hydraulic filters plus engine oil dipstick	●	●	●
Oil gauge (view level)	●	●	●
2 way mechanical levers with lift cut-off valve, load check valve and tilt lock valve	●	●	●
LED headlights / turn signal lamps / rear combination lamps / rear reflectors	●	●	●
Rear view mirrors and rear under-view mirror	●	●	●
Wet disc type electrically controlled parking brake	●	●	●
Fully hydrostatic steering with tilt adjustable steering column	●	●	●
Adjustable swivel suspension seat with seat belt	●	●	●
Operator tool kit	●	●	●
Automatic 3 speed powershift transmission, with torque converter and oil dipstick	●	●	●
Front dual pneumatic tyres, rear single pneumatic tyres	●	●	●
COCKPIT			
Steel cabin	○	○	○
Air conditioner	○	○	○
Heater and defroster	○	○	○
Direction change lever at right hand	○	○	○
Windshield with wiper	○	○	○
ACCESSORIES			
High-volume reversing buzzer	○	○	○
LED headlights / turn signal lamps / rear combination lamps / rear reflectors	●	●	●
LED rear work light	○	○	○
Front working lamps on fender (LED)	○	○	○
SAFETY DEVICES			
Central lubrication system	○	○	○
Fire extinguisher	○	○	○
Interlock for travelling, lifting and tilting	●	●	●
Seat belt interlock	○	○	○
ATTACHMENTS			
Side shifter integral type (shaft-on type)	○	○	○
Fork positioner hydraulic cylinder type	○	○	○
Fork positioner with side shifter hydraulic cylinder type	○	○	○

● Standard ○ Option

Contact your dealer for additional standard and optional equipment.

Characteristics		
1.01	Manufacturer (abbreviation)	
1.02	Manufacturer's model designation	
1.03	Power source: (battery, diesel, LP gas, petrol)	
1.04	Operator type: pedestrian, (operator) standing, seated	
1.05	Load capacity	Q (kg)
1.06	Load centre distance	c (mm)
1.08	Load distance, axle to fork face	x (mm)
1.09	Wheelbase	y (mm)
Weight		
2.01	Truck weight, without load / including battery (simplex mast, lowest lift height)	kg
2.02	Axle loading with maximum load, front/rear (simplex mast, lowest lift height)	kg
2.03	Axle loading without load, front/rear (simplex mast, lowest lift height)	kg
Wheels, Drive Train		
3.01	Tyres: V=solid, L=pneumatic, SE=solid pneumatic - front / rear	
3.02	Tyre dimensions, front	
3.03	Tyre dimensions, rear	
3.05	Number of wheels, front / rear (x=driven)	
3.06	Track width (centre of tyres), front	b10 (mm)
3.07	Track width (centre of tyres), rear	b11 (mm)
Dimensions		
4.01	Mast tilt, forwards/backwards	∂/β °
4.02	Height with mast lowered (see tables)	h1 (mm)
4.03	Free lift (see tables)	h2 (mm)
4.04	Lift height (see tables)	h3 (mm)
4.05	Overall height with mast raised	h4 (mm)
4.07	Height to top of overhead guard	h6 (mm)
4.08	Seat height	h7 (mm)
4.12	Tow coupling height	h10 (mm)
4.19	Overall length	l1 (mm)
4.20	Length to fork face (includes fork thickness)	l2 (mm)
4.21	Overall width	b1/b2 (mm)
4.22	Fork dimensions (thickness, width, length)	s / e / l (mm)
4.23	Fork carriage to DIN 15 173 A/B/No	
4.24	Fork carriage width	b3 (mm)
4.31	Ground clearance under mast, with load	m1 (mm)
4.32	Ground clearance at centre of wheelbase, with load (forks lowered)	m2 (mm)
4.33	Working aisle width with 1000 x1200 mm pallets, crosswise	Ast (mm)
4.34	Working aisle width with 800 x1200 mm pallets, crosswise	Ast (mm)
4.34a	Working aisle width with 800 x1200 mm pallets, lengthwise	Ast (mm)
4.35	Turning circle radius	Wa (mm)
4.36	Minimum distance between centres of rotation	b13 (mm)
Performance		
5.01	Travel speed, with / without load	km / h
5.02	Lifting speed, with / without load	m / s
5.03	Lowering speed, with / without load	m / s
5.06	Maximum drawbar pull, with/without load (5 min short duty)	N
5.07	Gradeability, with/without load	%
5.10	Service brakes (mechanical/hydraulic/electric/pneumatic)	
IC Engine		
7.01	Manufacturer / type	
7.02	Rated / nominal output to ISO 1585**	kW
7.03	Rated speed to DIN 70 020	rpm
7.04	Number of cylinders / cubic capacity	cm³
7.05	Fuel consumption according to VDI 60 cycle	l/h / kg/h
7.06	Max torque	Nm
7.07	Max torque at engine speed	rpm
Miscellaneous		
8.01	Type of drive control	
8.02	Maximum operating pressure for attachments	bar
8.03	Oil flow for attachments	l / min

Cat Lift Trucks	Cat Lift Trucks	Cat Lift Trucks
DP180NE	DP200NE	DP230NE
Diesel	Diesel	Diesel
Seated	Seated	Seated
18000	20000	23000
900	900	900
925	925	945
3650	3650	3650
25040	27260	30760
38770 / 4270	42580 / 4680	48330 / 5430
11770 / 13270	12580 / 14680	13710 / 17050
L	L	L
13.00-24-20PR	14.00-24-24PR	14.00-24-24PR
13.00-24-20PR	14.00-24-24PR	14.00-24-24PR
4x / 2	4x / 2	4x / 2
2195	2185	2185
2340	2300	2300
6 / 12	6 / 12	6 / 12
3545	3575	3580
0	0	0
3000	3000	3000
5040	5070	5080
3230	3260	3260
2180	2210	2210
760	790	790
7205	7205	7990
5365	5365	5545
2990	3060	3060
100 x 260 x 1830	100 x 260 x 1830	98 x 310 x 2440
No	No	No
2750	2750	2750
270	300	290
325	355	355
7125	7275	7495
6925	7075	7295
7325	7475	7695
5000	5150	5350
1720	1950	1950
/ 34	/ 34	/ 32
0.29 / 0.31	0.285 / 0.31	0.26 / 0.24
0.4 / 0.6	0.4 / 0.6	0.4 / 0.6
119000 / 68000	113000 / 70000	113000 / 76000
20 / 25	17.9 / 23.8	15.2 / 23.3
Pneumatic-Hydraulic	Pneumatic-Hydraulic	Pneumatic-Hydraulic
6BG1T	6BG1T	6BG1T
125.0	125.0	125.0
2200	2200	2200
6 / 6494	6 / 6494	6 / 6494
-	-	-
620	620	620
1800	1800	1800
Powershift 3 / 3	Powershift 3 / 3	Powershift 3 / 3
206	206	206
260	260	260



$Ast = Wa + x + l6 + a$
 Ast = Working aisle width with load
 a = Safety clearance (200 mm)
 l6 = Pallet length (800 or 1000 mm)
 b12 = Pallet width (1000 mm)

DP180NE								
Mast Type	Mast model	Q @ c = 600mm kg	Q @ c = 1220mm kg	h3 mm	h1 mm	h4 mm	Tilt angle FWD - BWD deg	Service weight Truck+mast kg
Simplex	2SP300	18,000	15,500	3,000	3,540	5,040	6 - 12	25,040
	2SP350	18,000	15,500	3,500	3,790	5,540	6 - 12	25,210
	2SP400	18,000	15,500	4,000	4,040	6,040	6 - 12	25,400
	2SP450	18,000	15,500	4,500	4,290	6,540	6 - 12	25,740
	2SP500	18,000	15,500	5,000	4,540	7,040	6 - 12	25,920
	2SP550	16,000	14,000	5,500	4,790	7,540	6 - 12	26,100
	2SP600	15,000	13,000	6,000	5,040	8,040	6 - 12	26,270

DP200NE								
Mast Type	Mast model	Q @ c = 600mm kg	Q @ c = 1220mm kg	h3 mm	h1 mm	h4 mm	Tilt angle FWD - BWD deg	Service weight Truck+mast kg
Simplex	2SP300	20,000	18,000	3,000	3,570	5,070	6 - 12	27,260
	2SP350	20,000	18,000	3,500	3,820	5,570	6 - 12	27,430
	2SP400	20,000	18,000	4,000	4,070	6,070	6 - 12	27,620
	2SP450	20,000	18,000	4,500	4,320	6,570	6 - 12	27,960
	2SP500	20,000	18,000	5,000	4,570	7,070	6 - 12	28,140
	2SP550	18,000	16,000	5,500	4,820	7,570	6 - 12	28,320
	2SP600	16,000	14,500	6,000	5,070	8,070	6 - 12	28,490

DP230NE								
Mast Type	Mast model	Q @ c = 600mm kg	Q @ c = 1220mm kg	h3 mm	h1 mm	h4 mm	Tilt angle FWD - BWD deg	Service weight Truck+mast kg
Simplex	2SP300	23,000	20,000	3,000	3,580	5,080	6 - 12	30,760
	2SP350	23,000	20,000	3,500	3,830	5,580	6 - 12	30,990
	2SP400	23,000	20,000	4,000	4,080	6,080	6 - 12	31,230
	2SP450	23,000	20,000	4,500	4,330	6,580	6 - 12	31,760
	2SP500	23,000	20,000	5,000	4,580	7,080	6 - 12	32,000
	2SP550	21,500	19,000	5,500	4,830	7,580	6 - 12	32,250
	2SP600	20,000	18,000	6,000	5,080	8,080	6 - 12	32,480

Mast Performance and Capacity

- h1 Height with mast lowered
- h2 Standard free lift
- h3 Lift height
- h4 Height with mast raised
- h5 Full free lift
- Q Lifting capacity, rated load
- c Load centre (distance)



info@catliftruck.com | www.catliftruck.com

CEESC2469_AME(03/24) © 2024 MLE B.V. (registration no. 33274459). All rights reserved. CAT, CATERPILLAR, LET'S DO THE WORK, their respective logos, "Caterpillar Corporate Yellow", the "Power Edge" and Cat "Modern Hex" trade dress as well as corporate and product identity used herein, are trademarks of Caterpillar and may not be used without permission.

NOTE: Performance specifications may vary depending on standard manufacturing tolerances, vehicle condition, types of tyres, floor or surface conditions, applications, or operating environment. Trucks may be shown with non-standard options. Specific performance requirements and locally available configurations should be discussed with your Cat lift truck dealer. Cat Lift Trucks follows a policy of continual product improvement. For this reason, some materials, options and specifications could change without notice.



DOWNLOAD
BROCHURE



WATCH
VIDEOS



DOWNLOAD
OUR APP

