

# MAXIMUM PROFIT



**STACKERS** 1.0 - 2.0 TONNES





# CHOOSE PROFITABILITY

**Increase your productivity and lower your costs with this stacker range from Cat® Lift Trucks. Our powerful technology, innovative design and high quality standards will boost your profits...**

Whatever your business – from warehousing and distribution to manufacturing and retail. Whatever your need. Our stackers offer:

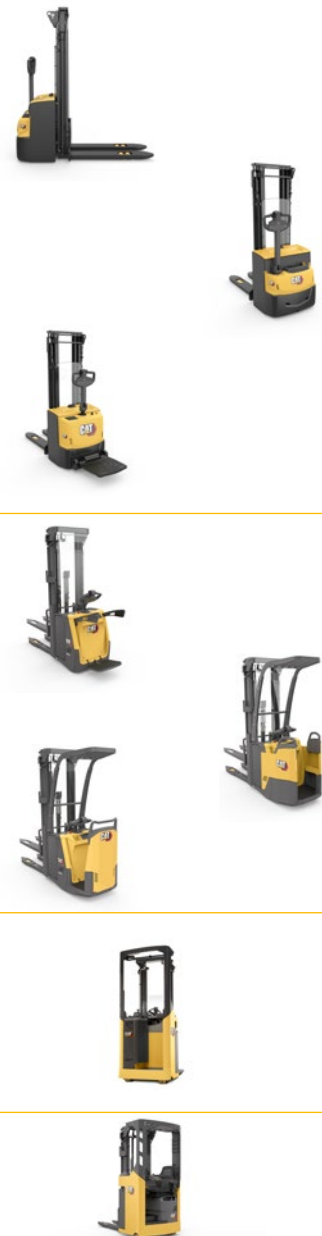
- More efficient storage and retrieval of goods
- Rapid transport over any distance
- And even order picking

We have 38 models to choose from – and many more equipment options. Your expert Cat® lift truck dealer will find the combination that's perfect for you. One that brings you the best possible return on your investment.

## 38 MODELS TO CHOOSE FROM

MODEL	CAPACITY (tonnes)	TYPE	MAX. SPEED (km/h)
NSP10N3	1.0	Pedestrian	6.0
NSP12N2C	1.2	Pedestrian	6.0
NSP12N3	1.2	Pedestrian	6.0
NSP12N3R	1.2	Ped/Platform	6.0
NSP12N3I	1.2	Ped, Initial Lift	6.0
NSP12N3IR	1.2	Ped/Platform Initial Lift	6.0
NSP14N3	1.4	Pedestrian	6.0
NSP14N3R	1.4	Ped/Platform	6.0
NSP14N3I	1.4	Ped, Initial Lift	6.0
NSP14N3IR	1.4	Ped/Platform Initial Lift	6.0
NSP16N3	1.6	Pedestrian	6.0
NSP16N3R	1.6	Ped/Platform	6.0
NSP16N3I	1.6	Ped, Initial Lift	6.0
NSP16N3IR	1.6	Ped/Platform Initial Lift	6.0
NSP16N3S	1.6	Pedestrian, Straddle	6.0
NSP16N3SR	1.6	Ped/Platform, Straddle	6.0
NSV12N3	1.2	Ped/Platform	8.5*
NSF12N3R	1.2	Platform (Rear Entry)	8.5
NSF12N3S	1.2	Platform (Side Entry)	8.5
NSV12N3I	1.2	Ped/Platform Initial Lift	8.5*
NSF12N3IR	1.2	Platform (Rear Entry) Initial Lift	8.5
NSF12N3IS	1.2	Platform (Side Entry) Initial Lift	8.5
NSV16N3	1.6	Ped/Platform	8.5*
NSF16N3R	1.6	Platform (Rear Entry)	8.5
NSF16N3S	1.6	Platform (Side Entry)	8.5
NSV16N3I	1.6	Ped/Platform Initial Lift	8.5*
NSF16N3IR	1.6	Platform (Rear Entry) Initial Lift	8.5
NSF16N3IS	1.6	Platform (Side Entry) Initial Lift	8.5
NSR12N2	1.2	Stand-in	10.0
NSR16N2	1.6	Stand-in	10.0
NSR20N2	2.0	Stand-in	9.0
NSR12N2I	1.2	Stand-in Initial Lift	9.0
NSR16N2I	1.6	Stand-in Initial Lift	9.0
NSR20N2I	2.0	Stand-in Initial Lift	9.0
NSS16N2	1.6	Sit-on	10.0
NSS20N2	2.0	Sit-on	9.0
NSS16N2I	1.6	Sit-on Initial Lift	9.0
NSS20N2I	2.0	Sit-on Initial Lift	9.0

(\*With optional side bars deployed. Otherwise 6.0.)



## OUR VERSATILE RANGE

The Cat stacker truck range covers:

- Nominal capacities from 1.0 to 2.0 tonnes
- Lift heights up to 7 metres

(Depending on your choice of model and mast)

Our line-up divides into **pedestrian**, **platform**, **stand-in** and **sit-on** sections. Within these, there are variants including:

**Straddle (S) models.** The straddle feature enables handling of extra-wide loads and bottom-boarded pallets. With load legs placed around the pallet, the forks are free to lift from ground level.

**Initial lift (I) models.** Initial lift allows increased ground clearance for work on ramps and uneven floors. It can also be used for handling of two pallets at once – one on the load legs and one on the forks.

We can add many **optional features** to match your application needs perfectly. They include cold store modification of some models.

Finally, we can **programme** each truck's performance characteristics according to the needs of your user and operation. For example, you may want slower drive and hydraulic speeds to cut energy costs or protect fragile loads.

## CONTENTS

## PAGE

---

CHOOSE PROFITABILITY

2

---

HIGHER PRODUCTIVITY WITH LOWER COSTS

4

---

NSP10-16N3 / NSP12N2C  
PEDESTRIAN STACKERS

6

---

NSV/NSF12-16N3  
PLATFORM STACKERS

8

---

NSR12-20N2  
STAND-IN STACKERS

10

---

NSS16-20N2  
SIT-ON STACKERS

12

---

EASY SERVICING

14

---

DEALER SERVICES

15



# HIGHER PRODUCTIVITY WITH LOWER COSTS

Your bottom line depends on:

- How productively your trucks perform
- How much they cost to run
- How fully you use your valuable storage space.

**Cat stackers offer compact design and great manoeuvrability. It means you can make your aisles narrower and create more space to store goods. With their high lifting capabilities, our stackers also make better use of your building's height. That increases your storage density further still.**

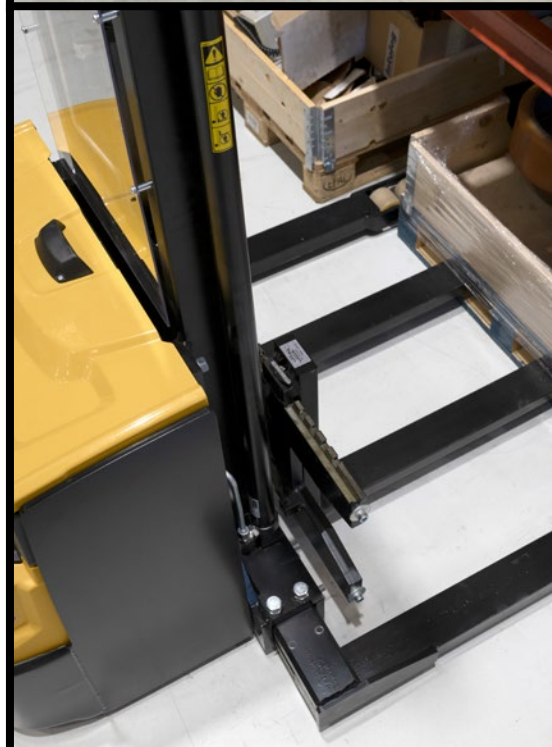
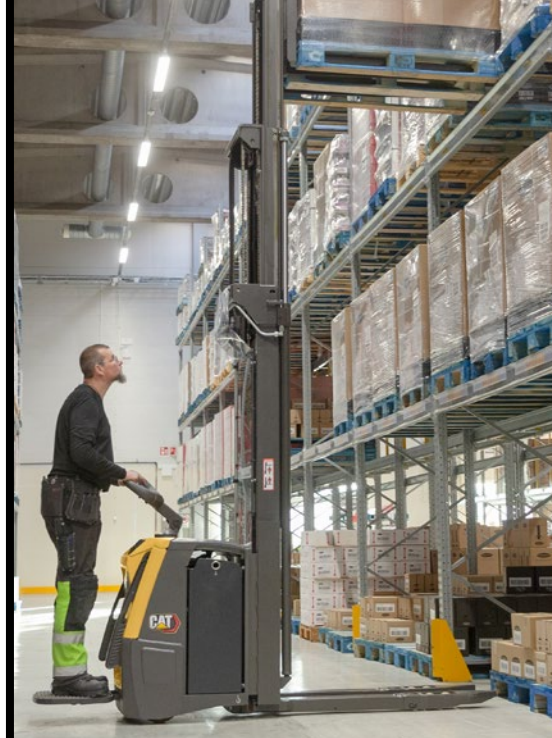
Their design is safe and stable, with clear all-round visibility – especially through the masts and to the fork tips. It gives your operators confidence to work quickly, even in narrow spaces. Powerful, technologically advanced functions are governed smoothly and precisely via ergonomic controls which optimise operator performance.

The cleverly designed, user-friendly tiller arms of our pedestrian and platform stackers are typical of our attention to ergonomics and comfort. For added safety, they engage brakes automatically in various situations: when the tiller arm is released; when the tiller is fully raised or lowered; when changing travel direction; when releasing the accelerator; and when stopping on a ramp.

Our stand-in stackers are controlled instead via an adjustable steering wheel and an armrest-mounted unit for drive and hydraulics.

When it comes to minimising ongoing expense, energy-efficient systems are one of the keys. Consumption can also be cut by using energy-saving programme options. On all models, you can choose between lithium-ion (Li-ion) and lead-acid batteries. Li-ion offers greater battery efficiency, runtime and lifetime, along with minimal maintenance needs. Meanwhile, its fast opportunity charging enables continuous operation without battery changes.

Finally, robust construction, high-quality components and easy service access reduce the cost of maintaining these stacker trucks.







(Pictured far left, from top)

The **NSV/NSF12-16N3** range of platform stackers includes initial lift (I) versions that allow ground clearance to be increased for ramp work.

The extensive **NSP10-16N3** pedestrian range includes this straddle (S) model, with a foldable platform, that enables handling of UK-pallets in confined spaces.

**NSS16-20N2** sit-on stackers add extra operator comfort for long shifts and distances.

(Main picture)  
**NSR12-20N2** stand-in trucks, with a compact footprint ideal for narrow aisles, will stack up to 7m and shuttle over both long and short distances.



DOWNLOAD  
SPEC SHEET

# NSP10-16N3 / NSP12N2C

## PEDESTRIAN STACKERS

### DESIGNED FOR SHORT SHUTTLE APPLICATIONS AND STACKING UP TO 5.4 METRES HIGH.

This range of pedestrian stacker trucks incorporates all the latest technology to provide a reliable and productive handling workhorse for any warehouse.

Fleet managers will be impressed by the low running costs and productivity boost that result from the trucks' water- and dirt-resistant construction, their overall robustness and the energy-saving programmable drive options. Maintenance staff will appreciate the straightforward access to all major truck parts and the reduced component count that results from the integrated drive and lift system.

Operators will enjoy the smooth and precise control characteristics, the comfortable operating position provided by the latest tiller arm design and the excellent visibility through the mast. And health and safety managers will love the extra load stability afforded by the height-adjustable castor wheel and the high-strength masts.

The **NSP10N3** is a highly capable 1.0 tonne machine that will fit into the tightest warehouse environments. Compact model **NSP12N2C** is the narrowest and lightest of all. The **NSP12N3** and more muscular **NSP14N3** and **NSP16N3** offer 1.2, 1.4 and 1.6 tonne load capacities respectively.

There are versions with a fold-down operator platform to take all the legwork out of longer distances (**NSP12/14/16N3R**). Initial lift variants (**NSP12/14/16N3I**) allow ground clearance to be increased for ramp work. Versions with both operator platform and initial lift are also available (**NSP12/14/16N3IR**).

For bottom-boarded or extra-wide pallets, the **NSP16N3S** provides the perfect way to straddle the load, while the **NSP16N3SR** is a straddle truck with a fold-down operator platform.

#### 16 MODELS TO CHOOSE FROM

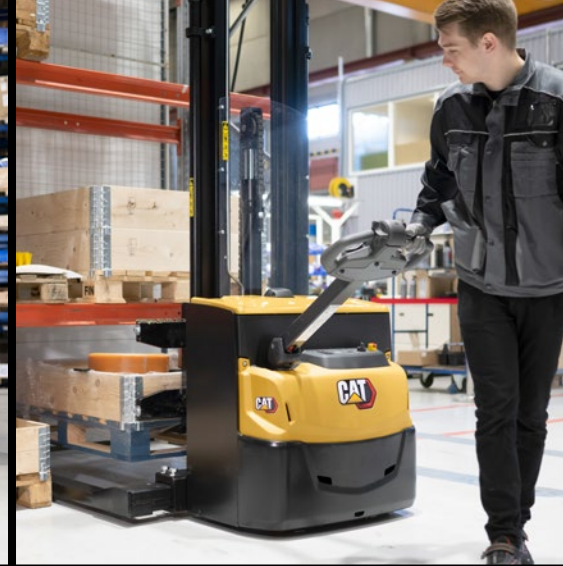
MODEL	CAPACITY (tonnes)	TYPE	MAX. SPEED (km/h)	VOLTS/ Ah
NSP10N3	1.0	Pedestrian	6.0	24 / 150
NSP12N2C	1.2	Pedestrian	6.0	24 / 150-230
NSP12N3	1.2	Pedestrian	6.0	24 / 150-250
NSP12N3R	1.2	Ped/Platform	6.0	24 / 150-250
NSP12N3I	1.2	Ped, Initial Lift	6.0	24 / 250
NSP12N3IR	1.2	Ped/Platform Initial Lift	6.0	24 / 150-250
NSP14N3	1.4	Pedestrian	6.0	24 / 250
NSP14N3R	1.4	Ped/Platform	6.0	24 / 250
NSP14N3I	1.4	Ped, Initial Lift	6.0	24 / 250
NSP14N3IR	1.4	Ped/Platform Initial Lift	6.0	24 / 250
NSP16N3	1.6	Pedestrian	6.0	24 / 250-375
NSP16N3R	1.6	Ped/Platform	6.0	24 / 250-375
NSP16N3I	1.6	Ped, Initial Lift	6.0	24 / 250-375
NSP16N3IR	1.6	Ped/Platform Initial Lift	6.0	24 / 250-375
NSP16N3S	1.6	Pedestrian, Straddle	6.0	24 / 250-375
NSP16N3SR	1.6	Ped/Platform, Straddle	6.0	24 / 250-375

#### OPTIONS INCLUDE\*

- Lead-acid or fully integrated Li-ion battery
- Load backrest
- Z-tiller (offset arm)
- Foldable side stabilisers (NSP16N3 and NSP16N3R models)
- Multifunction display including hour meter
- Equipment holder for A4-size list bracket, computer rack, bottle holder and pen holder
- Cold store modification class III for environments down to -35°C

\* For a complete list of options, please contact your nearest dealer.





(Pictured clockwise from left to right)

The class-leading *emPower* tiller head on all Cat pedestrian and platform stackers and power pallets provides:

- Easier reach – with either hand – to dual controls
- Unique patented design with optimum distance between hand and lift/lower buttons
- Optimised handle shape and cross-section
- Plenty of hand space - even when wearing gloves
- Enlarged horn and lift/lower buttons
- Butterfly-type, dual-direction speed and brake controls with seven convenient finger positions
- Comfortable, low-effort, precise operation – even when wearing gloves

Initial lift variants, (**NSP12/14/16N3I**), allow ground clearance to be increased for ramp work.

By straddling, the **NSP16N3S/R** trucks are able to handle bottom-boarded or extra-wide loads.

Compact pedestrian stacker **NSP12N2C** is the narrowest and lightest of all (at 660 mm and 775 kg including maximum battery).

(Main picture)

Operators have clear views through the masts for safe and accurate handling, reducing potential damage to loads, forks and racking.





DOWNLOAD  
SPEC SHEET

# NSV/NSF12-16N3 PLATFORM STACKERS

## DESIGNED FOR STACKING UP TO 5.4 METRES, AS WELL AS ORDER PICKING AND TRANSPORT, IN HIGH-INTENSITY, MULTIPLE-ROLE APPLICATIONS.

Although remarkably compact, our platform stackers are built with heavy-duty qualities and capabilities. Their fast, refined and safety-assured performance inspires confident and highly productive operation.

You can choose between folding platform (NSV) and fixed platform (NSF) versions. The NSF models have wraparound protective barriers with side (S) or rear (R) entry. For work on steep ramps and loading docks, we offer initial lift (I) variants. These can also handle two pallets at once, with one on the load legs and one on the forks.

There are three different steering choices, each featuring our class-leading, ergonomic, *emPower* tiller head:

- Tiller-type – power steering via a short tiller arm
- Comfort Steering – power steering via a tiller head without an arm (as on an electric scooter)
- Mechanical steering – non-powered but low-effort steering via a compact, simple, economical and durable tiller arm

Built on a highly stable and agile chassis, our stackers' operator-centric design and technology give instant confidence. The user's feeling of balance, responsive control and power remains consistent through every shift. Meanwhile, effective platform and mast damping enhance day-long comfort.

## 12 MODELS TO CHOOSE FROM

MODEL	CAPACITY (tonnes)	TYPE	MAX. SPEED (km/h)	VOLTS/ Ah
NSV12N3	1.2	Ped/Platform	8.5*	24/270-400
NSF12N3R	1.2	Platform (Rear Entry)	8.5	24/270-400
NSF12N3S	1.2	Platform (Side Entry)	8.5	24/270-400
NSV12N3I	1.2	Ped/Platform Initial Lift	8.5*	24/270-400
NSF12N3IR	1.2	Platform (Rear Entry) Initial Lift	8.5	24/270-400
NSF12N3IS	1.2	Platform (Side Entry) Initial Lift	8.5	24/270-400
NSV16N3	1.6	Ped/Platform	8.5*	24/270-400
NSF16N3R	1.6	Platform (Rear Entry)	8.5	24/270-400
NSF16N3S	1.6	Platform (Side Entry)	8.5	24/270-400
NSV16N3I	1.6	Ped/Platform Initial Lift	8.5*	24/270-400
NSF16N3IR	1.6	Platform (Rear Entry) Initial Lift	8.5	24/270-400
NSF16N3IS	1.6	Platform (Side Entry) Initial Lift	8.5	24/270-400

\*With optional side bars deployed. Otherwise 6.0.

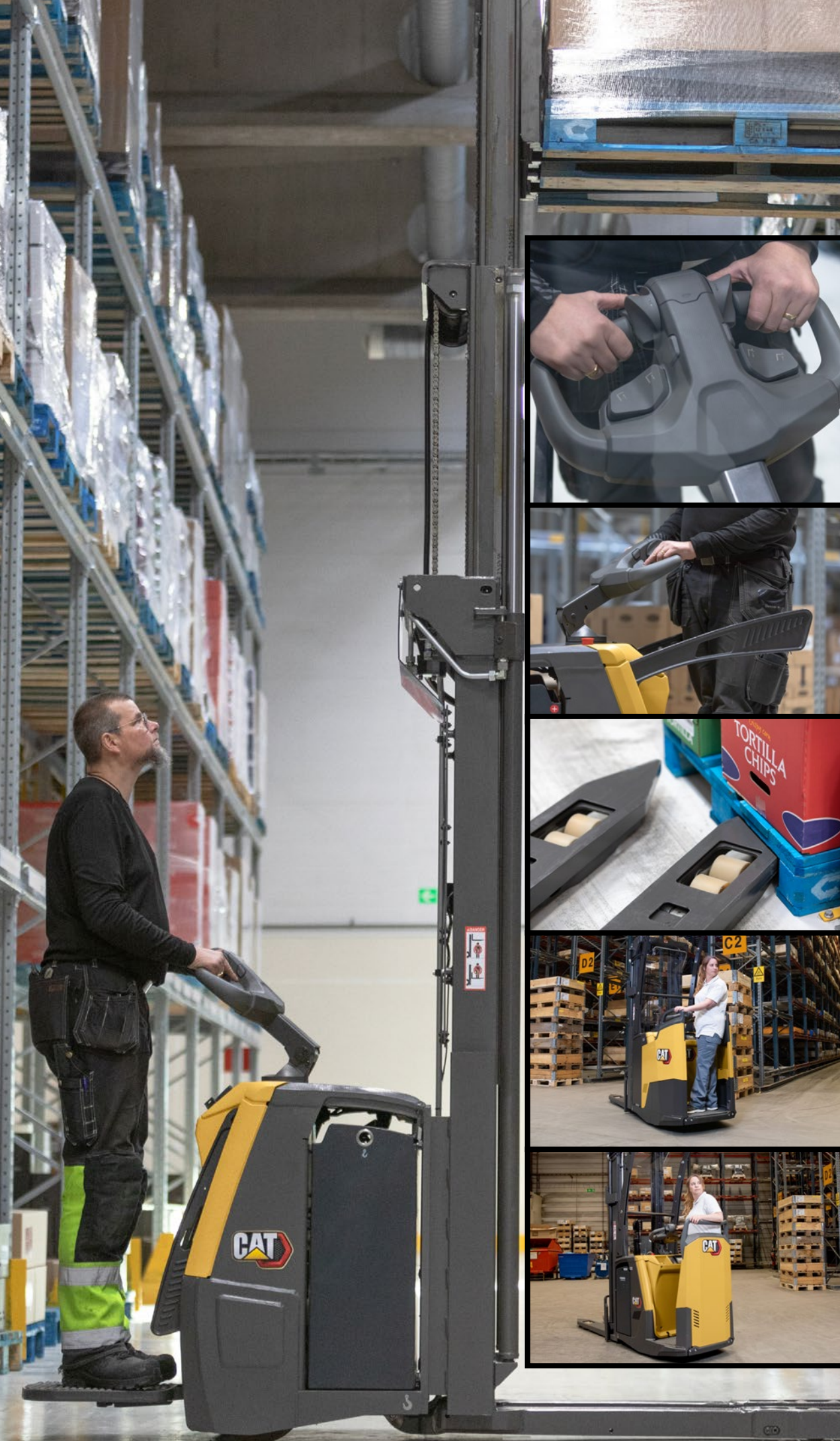
## OPTIONS INCLUDE\*

- Lead-acid or fully integrated Li-ion battery
- Electrically adjustable platform damping (NSF models)
- Foldable side bars (NSV models)
- Overhead guard (standard on NSF models; optional on NSV with power steering)
- Foot protection system (rear entry NSF models)
- Active Spin Reduction (ASR)
- Multifunctional display
- Cold store adaptation (-30°C) (not in combination with Li-ion battery)

\* For a complete list of options, please contact your nearest dealer.







(Main picture)  
These stackers are precision-engineered for fast travel and fast lifting speeds that guarantee high productivity. Pedestrian and platform models lift loads up to 5.4 metres with triplex mast.

(Inset pictures - top to bottom)

The operator connects to a compact, stable chassis via the best-in-class, ergonomic, *emPower* tiller head.

Optional protective side bars on folding platform models are deployed quickly and simply with one hand.

Forks with tapered underside and pointed tip avoid sticking, for easier and faster pallet entry/exit even while turning.

Fixed platform models give extra protection and comfort, with low step height – for easy entry/exit – and a choice of rear and side entry barrier designs.







DOWNLOAD  
SPEC SHEET

# NSR12-20N2 STAND-IN STACKERS

## DESIGNED FOR STACKING UP TO 7 METRES, HORIZONTAL TRANSPORT OVER LONG AND SHORT DISTANCES, AND ORDER PICKING.

Stand-in stackers offer a smart alternative approach which reduces TCO (total cost of operation) compared to platform versions. The trucks' smaller footprint and higher lifting, with optional extra residual capacity through foldable side stabilisers, allow increased stock density. You can make aisles narrower, racking taller and stack heavier loads at each height.

More compact and manoeuvrable than platform models, they move faster through narrow aisles – with no stops for folding and unfolding platforms and sidebars. Advanced drive, lifting, lowering, steering and stability systems make every task quicker and smoother. Operators can work confidently at high speed thanks to a clearer all-round view, an enclosed and protected operator space, and automated safety aids. Ergonomic, high-comfort design, from the world leaders in this specialised field, is another performance-enhancing factor. It all adds up to higher productivity.

Operators are empowered to do their work in less time – so less labour and fewer trucks are needed. The stackers' multi-role versatility further reduces fleet needs. For example, their lifting matches that of many reach trucks, but at a lower cost and in tighter spaces. They can also do the job of an order picker.

### 6 MODELS TO CHOOSE FROM

MODEL	CAPACITY (tonnes)	TYPE	MAX. SPEED (km/h)	VOLTS/ Ah
NSR12N2	1.2	Stand-in	10.0	24/375-775
NSR16N2	1.6	Stand-in	10.0	24/375-775
NSR20N2	2.0	Stand-in	9.0	24/375-775
NSR12N2I	1.2	Stand-in Initial Lift	9.0	24/375-775
NSR16N2I	1.6	Stand-in Initial Lift	9.0	24/375-775
NSR20N2I	2.0	Stand-in Initial Lift	9.0	24/375-775

### OPTIONS INCLUDE\*

- Lead-acid or fully integrated Li-ion battery
- Side stabilisers for extra residual capacity
- Level assistance system
- Laser fork height indicator
- Loading assistance
- Ergo forks trailing control
- Multifunctional display
- 360-degree steering

\* For a complete list of options, please contact your nearest dealer.







(Inset picture)  
Positionally adjustable controls minimise stress, strain and fatigue, while maximising precision and speed. They include an adjustable steering wheel, along with armrest-mounted features for simultaneous control of drive and hydraulic functions.

(Main picture)  
The high-comfort operator compartment gives all-round protection and is vibration-free, quiet and very easy to enter and exit.





DOWNLOAD  
SPEC SHEET

# NSS16-20N2

## SIT-ON STACKERS

### DESIGNED FOR INTENSIVE STACKING AND INTERNAL TRANSPORT, LONG DISTANCES AND SHIFTS, AND LIFTS UP TO 7 METRES.

Here's another productivity-enhancing and cost-cutting alternative. Our sit-on stackers bring high levels of comfort and ergonomics to operators working multiple hours and covering large areas. Their compact dimensions, easy manoeuvrability and high lifting enable increased storage density, while their performance advantages boost throughput.

They compete well with many reach trucks on lifting – but operate in tighter spaces and at a considerably lower cost. Compared to platform stackers, they have a smaller footprint and can lift to far greater heights. What's more, there are no stops to fold or unfold platforms or side bars. You can narrow your aisles, build your racking higher and – with strong residual capacities – stack heavier loads at each level.

Fully enclosed and protected by the truck's robust structure, operators can travel confidently and swiftly between racks. Automated stability aids optimise speeds to match activities, for quick but safe motion. Advanced drive, hydraulic, steering and electronic control systems make every action fast and smooth.

#### 4 MODELS TO CHOOSE FROM

MODEL	CAPACITY (tonnes)	TYPE	MAX. SPEED (km/h)	VOLTS/ Ah
NSS16N2	1.6	Sit-on	10.0	24/375 - 775
NSS20N2	2.0	Sit-on	9.0	24/375 - 775
NSS16N2I	1.6	Sit-on Initial Lift	9.0	24/375 - 775
NSS20N2I	2.0	Sit-on Initial Lift	9.0	24/375 - 775

The operator enjoys a quiet, low-vibration workspace, with a comfortable, adjustable suspension seat and user-friendly controls. These include positionally adjustable armrests which place the mini steering wheel and fingertip hydraulic levers within easy reach.

#### OPTIONS INCLUDE\*

- Lead-acid or fully integrated Li-ion battery
- Side stabilisers for extra residual capacity
- Level assistance system
- Laser fork positioning guide
- Floor spot warning lights
- Multifunctional display
- 360-degree steering
- Electrically adjustable floor height

\* For a complete list of options, please contact your nearest dealer.



**(Main picture)**

Ergonomics and comfort have been prioritised to minimise stress, strain and fatigue. Operators can work intensively over long shifts and distances.

**(Inset pictures)**

Residual capacity can be enhanced by deploying optional side stabilisers and by automatic travel speed limitation during high lifts. Strong and high lifting, together with a compact truck footprint, allow efficient use of warehouse storage space.



# EASY SERVICING



## **THE STACKER RANGE HAS BEEN DESIGNED FOR EASY MAINTENANCE AND SERVICING.**

All trucks benefit from easily opened panels and covers for quick service access to all components.

Although the powerful AC drive motors are virtually maintenance-free, built-in diagnostics monitor truck performance to minimise essential servicing downtime.

Lead-acid battery exchange is quick and easy, using standard battery rollers to maintain high shift productivity. Alternatively, you can choose Li-ion batteries which require no daily maintenance. They can be opportunity-charged rapidly during short breaks to keep the same battery going 24/7.

And now, unprecedented levels of component sharing within the Cat stacker and power pallet portfolio bring additional advantages. Fixes are faster – with even less downtime. Less stock investment is needed. And fewer service van and parts delivery journeys mean a smaller carbon footprint. Everyone wins!

More information on maintenance programmes and other dealer services are outlined in the following pages.

(Pictured left to right)  
Easy service access.  
Battery covers open for  
fluid checking.  
Fault code diagnosis aids  
fast servicing routines.





# A WEALTH OF DEALER SERVICES

Wherever you are, and however hard your challenges, your local Cat lift truck dealership is there to help. Our dealers' customer support and service teams are dedicated to answering every need. They will work closely in partnership with you and your business to ensure:

- You have the right trucks and equipment for the job
- Your trucks keep on running – at optimum efficiency
- Your operation achieves maximum results

## **Aftersales service**

Our fully equipped service vans will respond quickly to your calls. They carry specialised tools and stocks of genuine parts. Their drivers are well-trained service technicians with the latest technical information and knowledge. You can be sure of highly professional inspection, servicing and repair work.

## **Maintenance programmes**

Carefully scheduled servicing by our factory-trained technicians will minimise downtime and extend truck life. Our individually tailored programmes also help you with accurate budgeting and control over operating costs. We can work out a maintenance plan that's right for you.

## **Financing options**

We offer a wide range of finance plans to suit your cashflow and other circumstances. They include outright purchase, leasing and rental agreements. We can spread the cost of your trucks over their working life in the most tax-efficient way.

## **Fleet management**

We can monitor, control and reduce your materials handling costs. We can then re-engineer your fleet to meet your needs more cost-effectively. Our optional benefits for national or multinational operations include: service contracts; training and safety programmes; fleet audits; application surveys; centralised billing; cost analysis and reporting.

## **Parts supply**

Parts availability is crucial to maintaining productivity. Our 'full line, first pick' rate is the best in the industry. It currently stands at 97%. For current models it's even higher.

## **Dependable support**

You can depend on our dealerships. They, in turn, can depend on the support, expertise and resources of our global organisation. Together we'll do whatever it takes to make your business stronger.

For more information about Cat stacker trucks, or the rest of our comprehensive range, please contact your Cat lift truck dealer or visit **[www.catlifttruck.com](http://www.catlifttruck.com)**.



Whatever materials handling equipment you need, our global network of Cat lift truck dealers is equipped to provide the solution.

Our constant investment in selecting, developing and supporting our dealer network ensures you receive not just the best equipment but the best service, advice and support in the industry.

**LET'S DO THE WORK.™**



**WATCH  
VIDEOS**



**DOWNLOAD  
OUR APP**

**[www.catlifttruck.com](http://www.catlifttruck.com)**

©2022, MLE B.V. (registration no. 33274459). All rights reserved. CAT, CATERPILLAR, LET'S DO THE WORK, their respective logos, Caterpillar Corporate Yellow, the "Power Edge" and Cat "Modern Hex" trade dress as well as corporate and product identity used herein, are trademarks of Caterpillar and may not be used without permission. Printed in The Netherlands. NOTE: Performance specifications may vary depending on standard manufacturing tolerances, vehicle condition, types of tyres, floor or surface conditions, applications, or operating environment. Trucks may be shown with non-standard options. Specific performance requirements and locally available configurations should be discussed with your Cat Lift Trucks Dealer. Cat Lift Trucks follows a policy of continual product improvement. For this reason, some materials, options and specifications could change without notice.

WEBC2300

**CAT®**

(03/23)